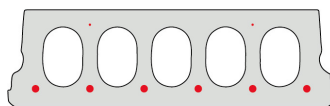
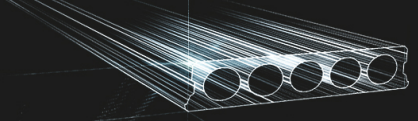


# F170-600



## Technische info

|                  |  |
|------------------|--|
| Hoogte           | 173mm  |
| Breedte          | 600mm  |
| Lengte           | Wap. S350: 0,70m => 6,60m uit voorraad (per 10cm oplopend)<br>Wap. S350: 6,70m => 7,00m op bestelling (per 10cm oplopend)  |
|                  | Wap. S700: 0,70m => 5,20m op bestelling (per 10cm oplopend)<br>Wap. S700: 5,30m => 5,90m uit voorraad (per 10cm oplopend)<br>Wap. S700: 5,90m => 6,60m op bestelling (per 10cm oplopend) |
| Brandweerstand   | 1 uur (2u op bestelling)   |
| Milieuklasse     | XC1; XC2; XC3 (andere op bestelling)   |
| Transportgewicht | 2,70 kN/m <sup>2</sup>   |
| Gewicht/ m       | 1,62 kN/m  |
| Rekengewicht     | 3,00 kN/m <sup>2</sup>   |
| Kanaalvulling    | 6,46 l/m   |
| Vulbeton         | 10 l/m <sup>2</sup>  |
| Betonkwaliteit   | C 40/50  |
| Staalkwaliteit   | f(yk) 500; f(tk) 550   |

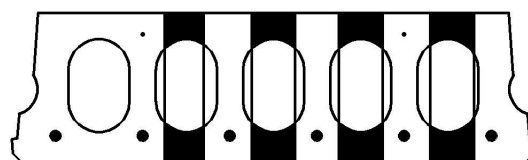


## Overspanningen

| Maximale Elementlengte F170-600 GLAD   |       |       |       |       |       |       |       |
|--|-------|-------|-------|-------|-------|-------|-------|
| Wapeningstype                          | S350  |       | S700  |       | Max   |       |       |
| Druklaag                               | 0cm   | 5cm   | 0cm   | 5cm   | 0cm   | 5cm   |       |
| Nuttige Belasting (kN/m <sup>2</sup> ) | 3,00  | 5,50m | 6,60m | 5,70m | 6,90m | 6,00m | 7,00m |
|  | 3,50  | 5,30m | 6,20m | 5,40m | 6,60m | 5,80m | 6,80m |
|  | 4,00  | 5,10m | 6,00m | 5,20m | 6,20m | 5,50m | 6,60m |
|  | 5,00  | 4,70m | 5,50m | 4,80m | 5,70m | 5,20m | 6,10m |
|  | 6,00  | 4,30m | 5,20m | 4,50m | 5,30m | 4,90m | 5,80m |
|  | 7,00  | 2,10m | 4,90m | 4,20m | 5,10m | 4,60m | 5,50m |
|  | 8,00  | 2,00m | 4,70m | 3,90m | 4,80m | 4,40m | 5,30m |
|  | 9,00  | 1,90m | 3,00m | 3,00m | 4,70m | 4,20m | 5,10m |
|  | 10,00 | 1,80m | 2,10m | 2,10m | 4,50m | 4,10m | 4,90m |

\*De waardes zijn berekend met een opleg van 7cm aan beide uiteinden

## Pasplaten

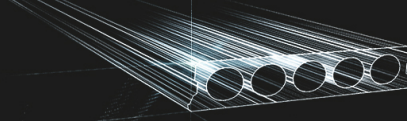


175-220

375-425

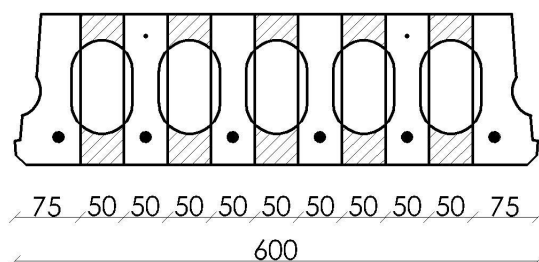
275-325

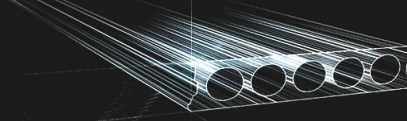
480-530



## Booradvies

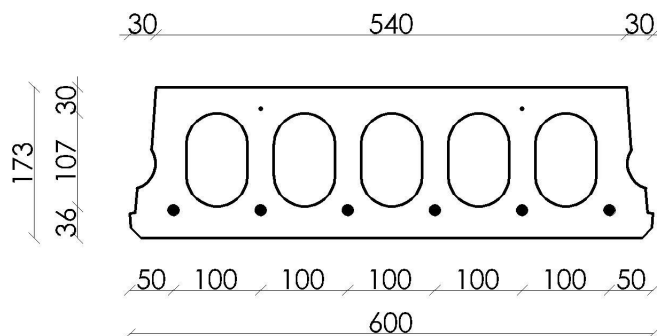
---

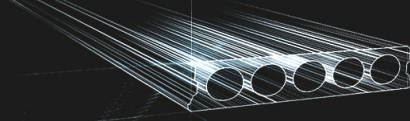




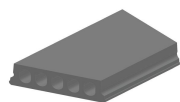
## Wapeningspositie

---

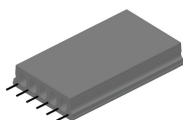




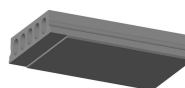
## Supplementen



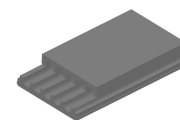
Schuinzagen/inkorten



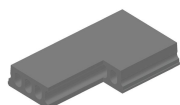
Uitstekende wapening



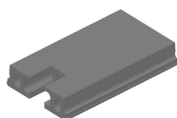
Verdunde onderzijde



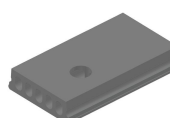
Verdunde bovenzijde



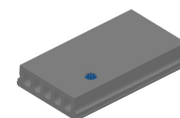
Hoeksparing



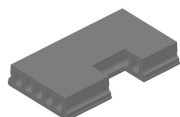
Kopsparing



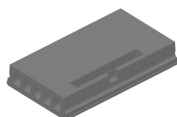
Ronde sparing



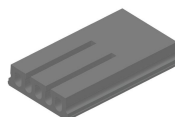
Ronde sparing + CD



Zijsparing



Hamerkop



Opengemaakte kanalen



Raveelijzers - Gewapend

## Voorraad

|             | Productie | Afhaalbaar | Op voorraad |
|-------------|-----------|------------|-------------|
| Malle 1     | X         | X          | X           |
| Malle 2     |           |            |             |
| Frederickx  |           | X          |             |
| Tessenderlo |           |            |             |