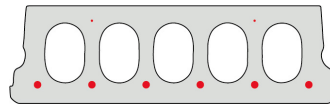
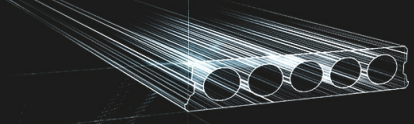


F170-600



Technische info

Hoogte	173mm
Breedte	600mm
Lengte	Wap. S350: 0,70m => 6,60m uit voorraad (per 10cm oplopend) Wap. S350: 6,70m => 7,00m op bestelling (per 10cm oplopend) Wap. S700: 0,70m => 5,20m op bestelling (per 10cm oplopend) Wap. S700: 5,30m => 5,90m uit voorraad (per 10cm oplopend) Wap. S700: 5,90m => 6,60m op bestelling (per 10cm oplopend)
Brandweerstand	1 uur (2u op bestelling)
Milieuklasse	XC1; XC2; XC3 (andere op bestelling)
Transportgewicht	2,70 kN/m ²
Gewicht/ m	1,62 kN/m
Rekengewicht	3,00 kN/m ²
Kanaalvulling	6,46 l/m
Vulbeton	10 l/m ²
Betonkwaliteit	C 40/50
Staalkwaliteit	f(yk) 500; f(tk) 550

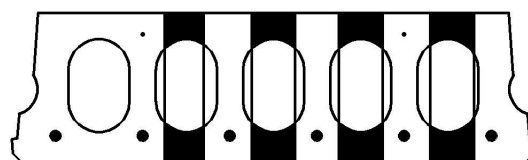


Overspanningen

Maximale Elementlengte F170-600 GLAD							
Wapeningstype	S350		S700		Max		
Druklaag	0cm	5cm	0cm	5cm	0cm	5cm	
Nuttige Belasting (kN/m ²)	3,00	5,50m	6,60m	5,70m	6,90m	6,00m	7,00m
	3,50	5,30m	6,20m	5,40m	6,60m	5,80m	6,80m
	4,00	5,10m	6,00m	5,20m	6,20m	5,50m	6,60m
	5,00	4,70m	5,50m	4,80m	5,70m	5,20m	6,10m
	6,00	4,30m	5,20m	4,50m	5,30m	4,90m	5,80m
	7,00	2,10m	4,90m	4,20m	5,10m	4,60m	5,50m
	8,00	2,00m	4,70m	3,90m	4,80m	4,40m	5,30m
	9,00	1,90m	3,00m	3,00m	4,70m	4,20m	5,10m
	10,00	1,80m	2,10m	2,10m	4,50m	4,10m	4,90m

*De waardes zijn berekend met een opleg van 7cm aan beide uiteinden

Pasplaten

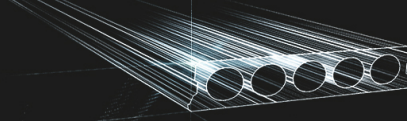


175-220

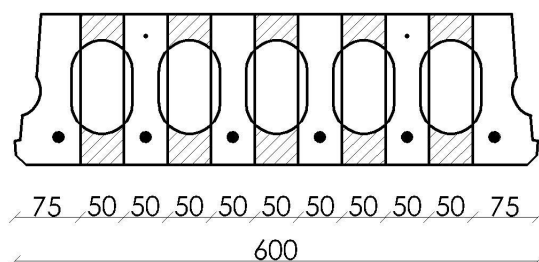
375-425

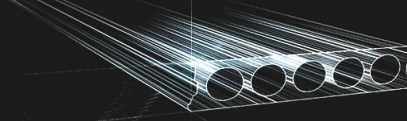
275-325

480-530

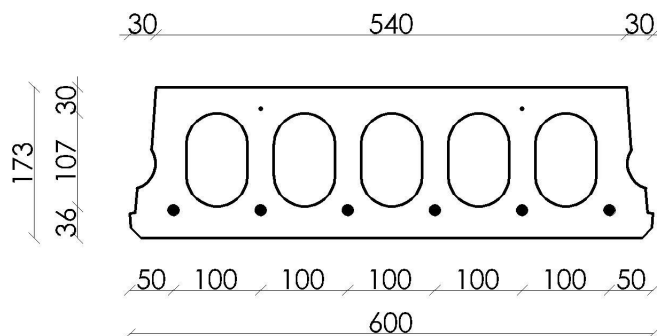


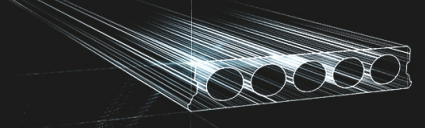
Booradvies



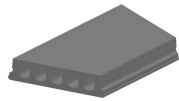


Wapeningspositie

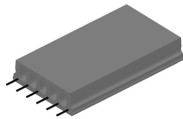




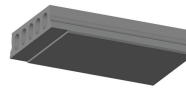
Supplementen



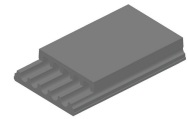
Schuinzagen/inkorten



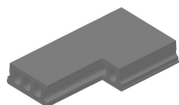
Uitstekende wapening



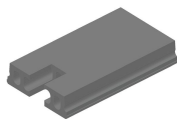
Verdunde onderzijde



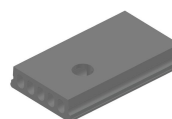
Verdunde bovenzijde



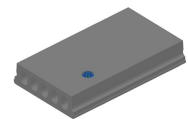
Hoeksparing



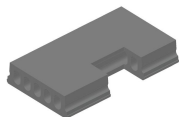
Kopsparing



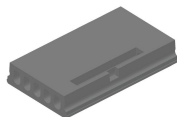
Ronde sparing



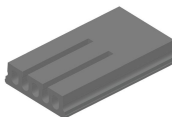
Ronde sparing + CD



Zijsparing



Hamerkop



Opengemaakte kanalen



Raveelijzers - Gewapend

Voorraad

	Productie	Afhaalbaar	Op voorraad
Malle 1	X	X	X
Malle 2			
Frederickx		X	
Tessenderlo			

Gedownload op: 02/06/2020 03:20:57