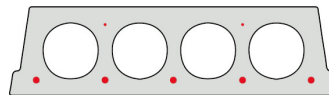
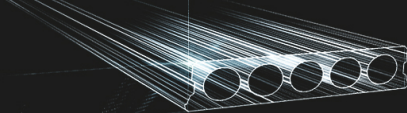


F130-500



Technische info

Hoogte	130mm
Breedte	500mm
Lengte	Wap. S350: 0,70m => 5,40m uit voorraad (per 10cm oplopend) Wap. S350: 5,50m => 5,90m op bestelling (per 10cm oplopend) Wap. S700: 0,70m => 5,40m uit voorraad (per 10cm oplopend)
Brandweerstand	1 uur (2u op bestelling)
Milieuklasse	XC1; XC2; XC3 (andere op bestelling)
Transportgewicht	1,77 kN/m ²
Gewicht/ m	0,89 kN/m
Rekengewicht	2,10 kN/m ²
Kanaalvulling	5,41 l/m
Vulbeton	9 l/m ²
Betonkwaliteit	C 40/50
Staalkwaliteit	f(yk) 500; f(tk) 550

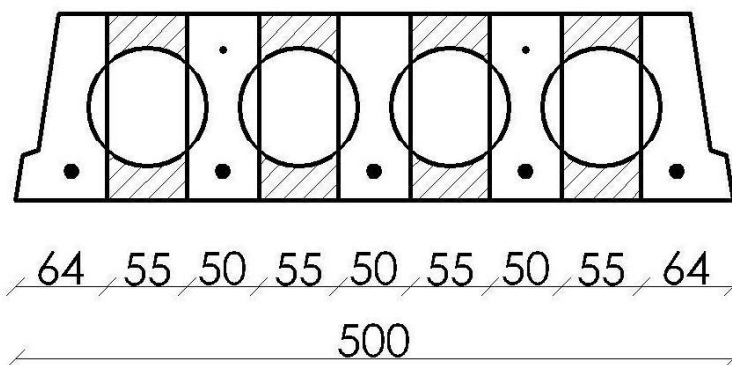


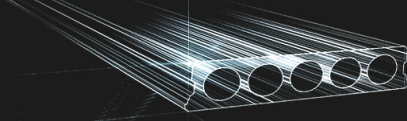
Overspanningen

Maximale Elementlengte F130-500 RUW							
Wapeningstype		S350		S700		Max	
Druklaag		0cm	5cm	0cm	5cm	0cm	5cm
Nuttige Belasting (kN/m ²)	3,00	4,20m	5,40m	4,50m	5,40m	4,50m	5,60m
	3,50	3,90m	5,40m	4,20m	5,40m	4,30m	5,40m
	4,00	3,00m	4,90m	4,00m	5,20m	4,10m	5,20m
	5,00	2,00m	4,50m	3,60m	4,80m	3,80m	4,80m
	6,00	1,90m	3,00m	3,40m	4,50m	3,60m	4,50m
	7,00	1,80m	2,00m	3,10m	4,20m	3,40m	4,30m
	8,00	1,70m	1,90m	2,10m	4,00m	3,20m	4,10m
	9,00	1,60m	1,80m	2,00m	3,80m	3,10m	4,00m
10,00	1,50m	1,80m	1,90m	3,60m	3,00m	3,80m	

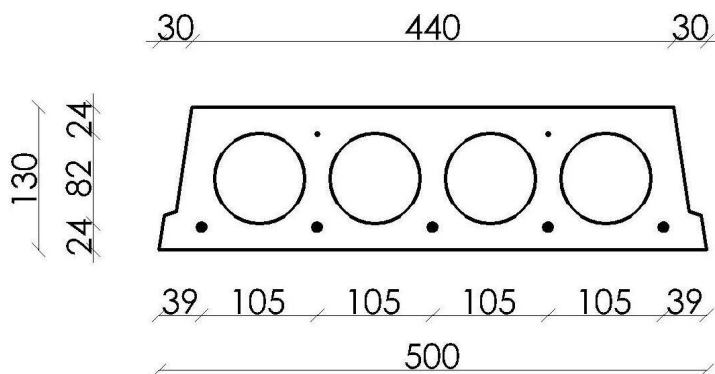
*De waardes zijn berekend met een opleg van 7cm aan beide uiteinden

Booradvies

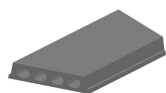




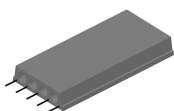
Wapeningspositie



Supplementen



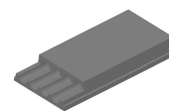
Schuinzagen/inkorten



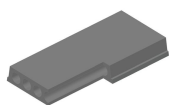
Uitstekende wapening



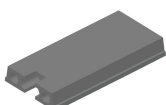
Verdunde onderzijde



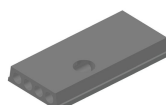
Verdunde bovenzijde



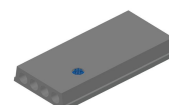
Hoeksparing



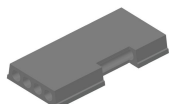
Kopsparing



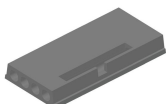
Ronde sparing



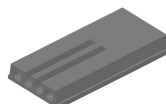
Ronde sparing + CD



Zijsparing



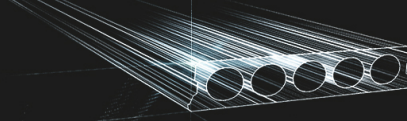
Hamerkop



Opengemaakte kanalen



Raveelijzers - Gewapend



Voorraad

	Productie	Afhaalbaar	Op voorraad
Malle 1	X	X	X
Malle 2			
Frederickx		X	
Tessenderlo			

Gedownload op: 29/04/2021 15:39:25



Fingo
Malle 1 Nijverheidsstraat 21
Malle 2 Industrieweg 22
Malle B-2390
+32 (0)3 309 26 26

Fingo Tessenderlo
Truibroek 76
Ham B-3945

fingo@fingo.be

Fingo - Frederickx
Schuttersveldstraat 11
Messelbroek B-3270
+32 (0)13 78 00 78

pagina 4 / 4