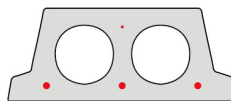


F130-330

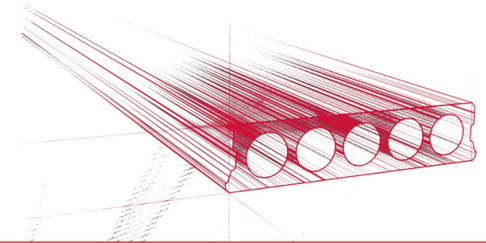


Informations techniques

Epaisseur	130mm
Largeur	330mm
Longueur	Armature S700: 0,700m => 5,40m de stock (par 10 cm)
Résistance au feu	1 heure (2 heures sur commande)
Classes d'exposition	XC1
Poids au transport	1,60 kN/m ²
Poids/ m	0,53 kN/m
Poids de calcul	2,15 kN/m ² (incl. béton de remplissage)
Remplissage d'alvéole	5,41 l/m
Béton de remplissage	22 l/m ²
Qualité du béton	C 40/50
Étalement	à partir de 3,80 m

Keurmerken



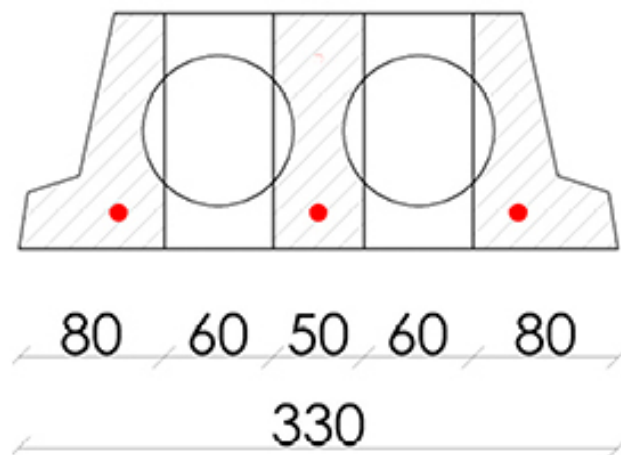


Travées

Zie hiervoor onze online rekenmodule

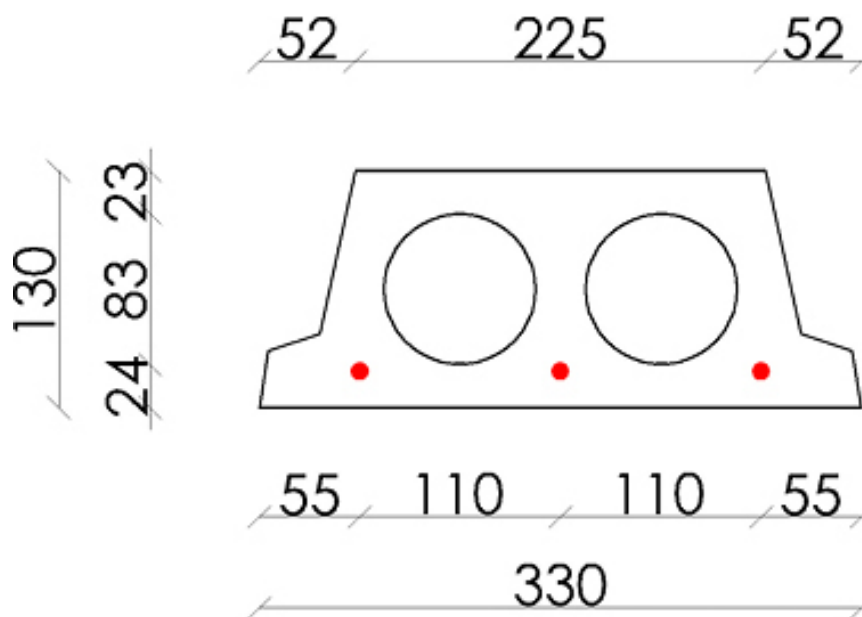


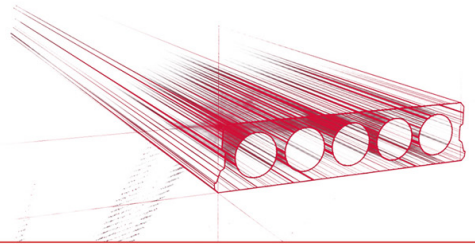
Conseil de forage



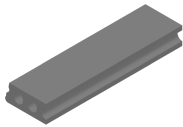


Position d'armature





Suppléments



Pasplatten - Gewapend



Sciage en coupe oblique



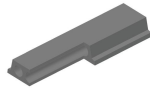
Armatures dépassantes



Amincissement inférieur



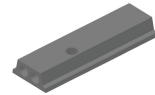
Amincissement supérieur



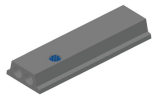
Evidement angulaire



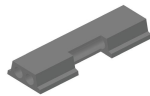
Evidement de tête



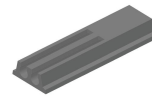
Evidement Ø90



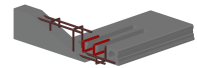
Evidement Ø90 + boîte de dérivation



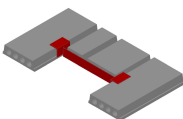
Evidement latéral



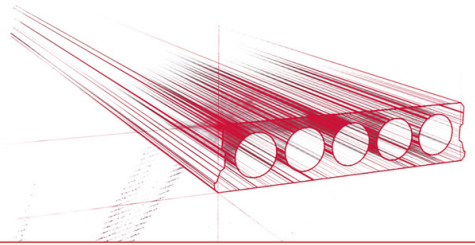
Alvéoles ouvertes



Alvéoles ouvertes et armatures d'ancrage



Chevêtre métallique - Armé



Stock

	Production	Emporter	Stock
Malle 1	X	X	X
Malle 2			
Frederickx			
Tessengerlo			

