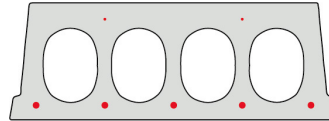
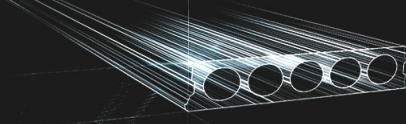


# F170-500



## Technische info

Hoogte	173mm
Breedte	500mm
Lengte	Wap. S350: 0,70m => 2,40m op bestelling (per 10cm oplopend)
	Wap. S350: 2,50m => 6,50m uit voorraad (per 10cm oplopend)
	Wap. S350: 6,60m => 7,00m op bestelling (per 10cm oplopend)
	Wap. S700: 0,70m => 4,60m op bestelling (per 10cm oplopend)
	Wap. S700: 4,70m => 6,50m uit voorraad (per 10cm oplopend)
	Wap. S700: 6,60m => 7,00m op bestelling (per 10cm oplopend)
Brandweerstand	1 uur (2u op bestelling) of REI60
Milieuklasse	XC1; XC2; XC3 (andere op bestelling)
Transportgewicht	2,25 kN/m <sup>2</sup>
Gewicht/ m	1,13 kN/m
Rekengewicht	2,60 kN/m <sup>2</sup>
Kanaalvulling	7,43 l/m
Vulbeton	11 l/m <sup>2</sup>
Betonkwaliteit	C 40/50
Staalkwaliteit	f(yk) 500; f(tk) 550

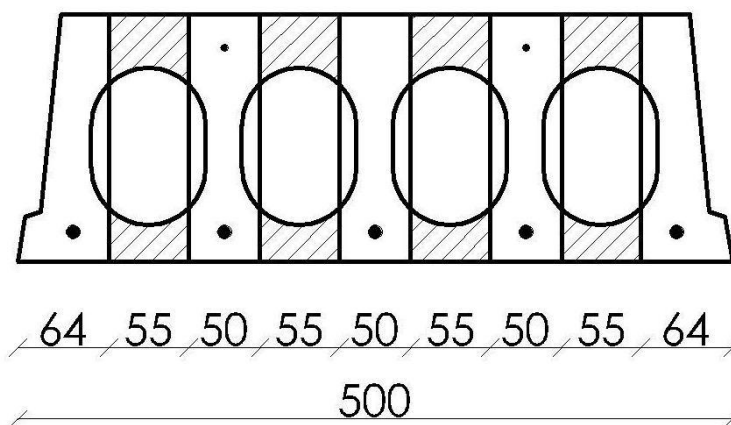


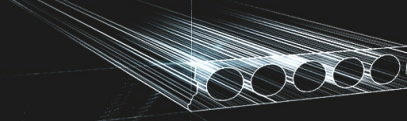
## Overspanningen

Maximale Elementlengte F170-500 RUW							
Wapeningstype		S350		S700		Max	
Druklaag		0cm	5cm	0cm	5cm	0cm	5cm
Nuttige Belasting (kN/m <sup>2</sup> )	3,00	5,90m	6,70m	6,00m	7,00m	6,20m	7,00m
	3,50	5,60m	6,40m	5,60m	6,90m	5,90m	6,90m
	4,00	5,40m	6,00m	5,40m	6,60m	5,70m	6,60m
	5,00	4,80m	5,80m	4,90m	6,00m	5,30m	6,20m
	6,00	3,00m	5,50m	4,60m	5,50m	5,00m	5,90m
	7,00	2,00m	4,80m	4,30m	5,10m	4,70m	5,60m
	8,00	1,90m	3,00m	4,10m	4,90m	4,50m	5,30m
	9,00	1,90m	2,10m	1,90m	4,70m	4,30m	5,10m
10,00	1,80m	2,00m	1,80m	4,50m	4,10m	4,90m	

\*De waardes zijn berekend met een opleg van 7cm aan beide uiteinden

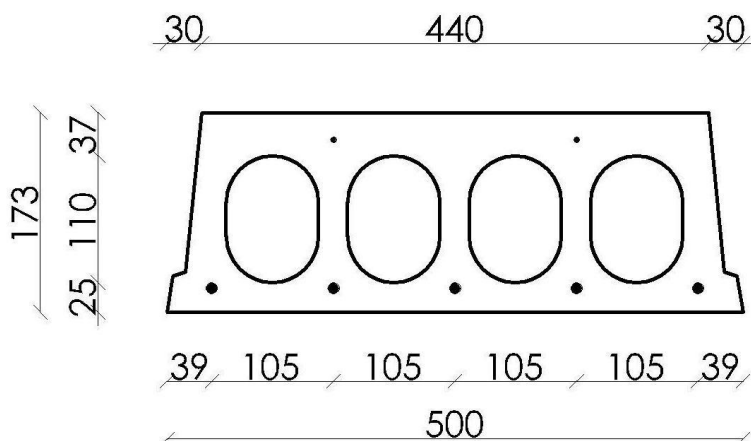
## Booradvies

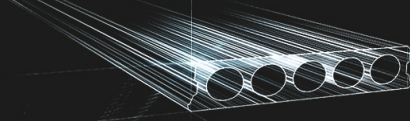




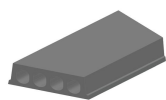
## Wapeningspositie

---

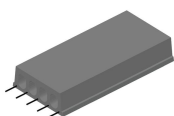




## Supplementen



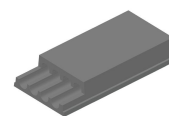
Schuinzagen/inkorten



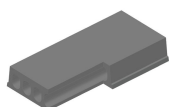
Uitstekende wapening



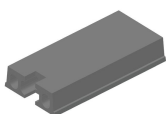
Verdunde onderzijde



Verdunde bovenzijde



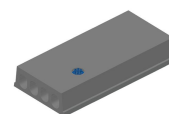
Hoeksparing



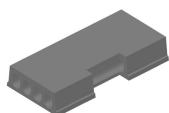
Kopsparing



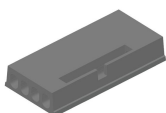
Ronde sparing



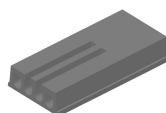
Ronde sparing + CD



Zijsparing



Hamerkop



Opengemaakte kanalen



Raveelijzers - Gewapend

## Voorraad

	Productie	Afhaalbaar	Op voorraad
Malle 1	X	X	X
Malle 2			
Frederickx		X	
Tessenderlo			