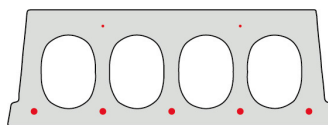


F170-500

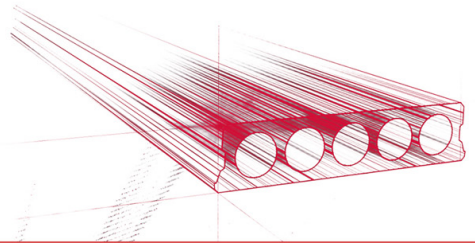


Informations techniques

Epaisseur	173mm
Largeur	500mm
Longueur	Armature S350: 0,70m => 5,90m de stock (par 10 cm) Armature S700: 6,00m de stock
Résistance au feu	1 heure (2 heures sur commande)
Classes d'exposition	XC1
Poids au transport	2,25 kN/m ²
Poids/ m	1,13 kN/m
Poids de calcul	2,60 kN/m ² (incl. béton de remplissage)
Remplissage d'alvéole	7,43 l/m
Béton de remplissage	11 l/m ²
Qualité du béton	C40/50
Étalement	à partir de 5,30 m

Keurmerken



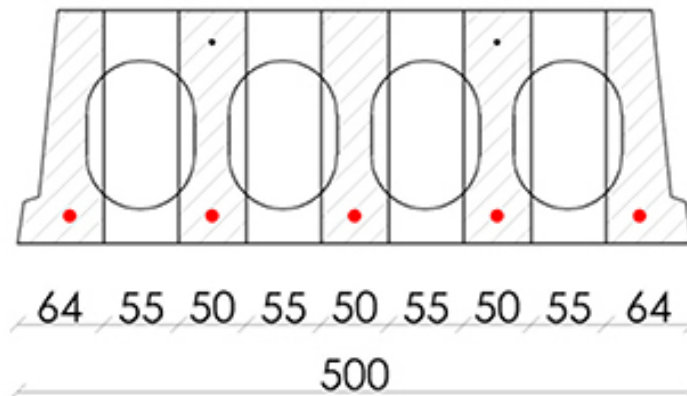


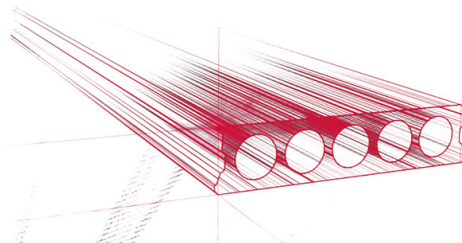
Travées

Zie hiervoor onze online rekenmodule

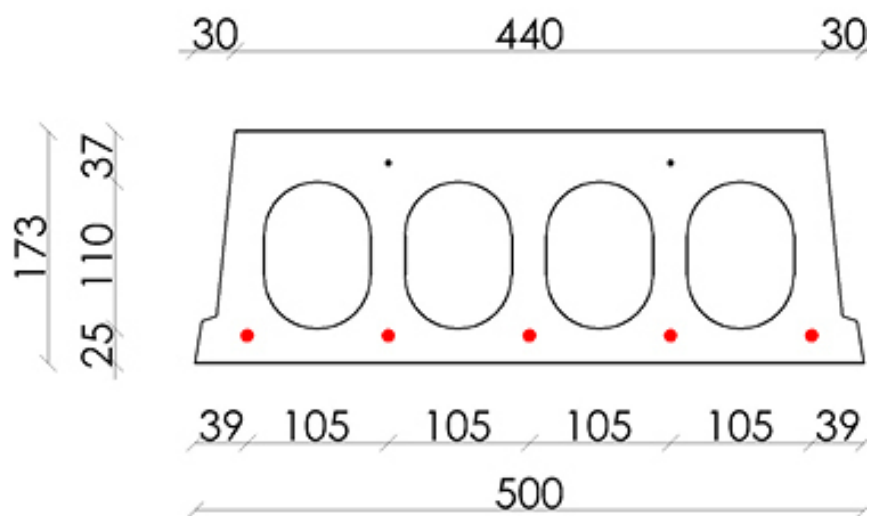


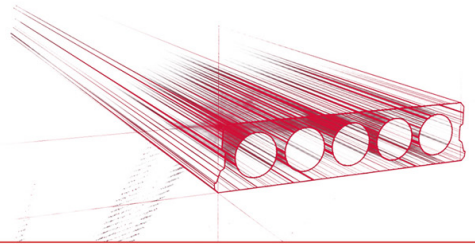
Conseil de forage



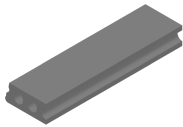


Position d'armature

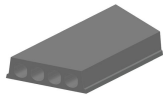




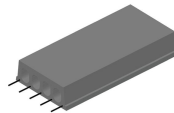
Suppléments



Pasplatten - Gewapend



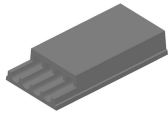
Sciage en coupe oblique



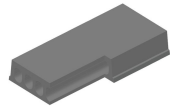
Armatures dépassantes



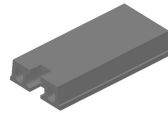
Amincissement inférieur



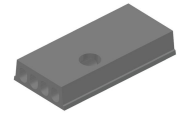
Amincissement supérieur



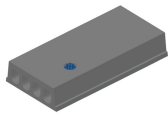
Evidement angulaire



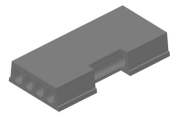
Evidement de tête



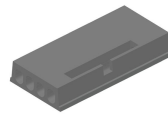
Evidement Ø90



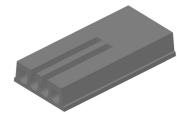
Evidement Ø90 + boîte de dérivation



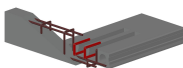
Evidement latéral



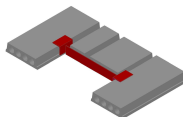
Tête de marteau



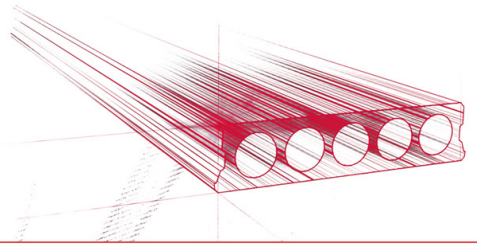
Alvéoles ouvertes



Alvéoles ouvertes et armatures d'ancrage



Chevêtre métallique - Armé



Stock

	Production	Emporter	Stock
Malle 1	X	X	X
Malle 2			
Frederickx			
Tessengerlo			

