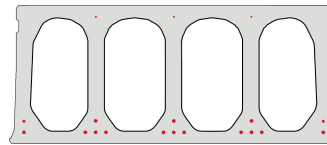


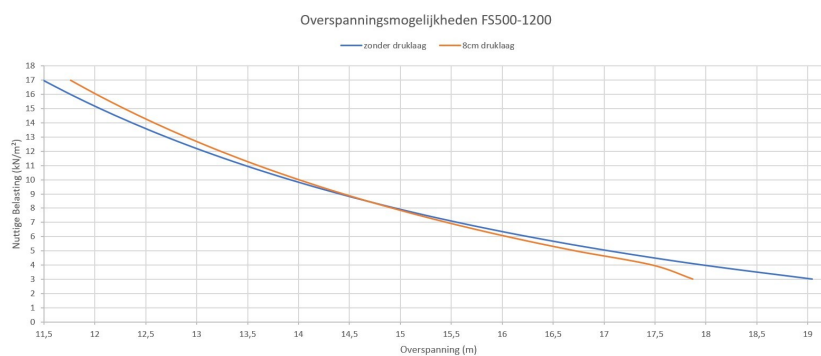
FS500-1200

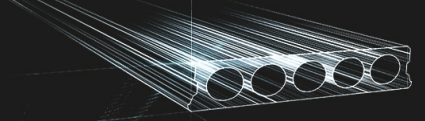


Technische info

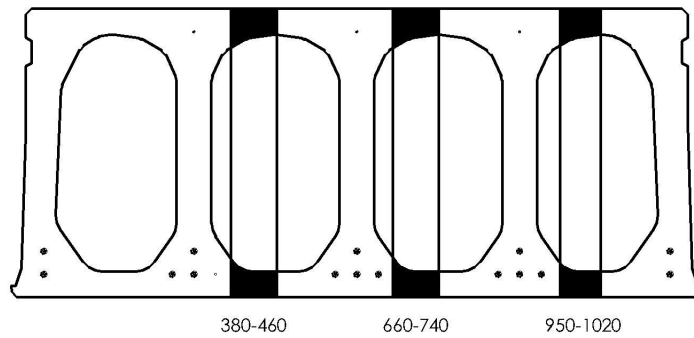
Hoogte	500
Breedte	1200
Brandweerstand	1 uur (2u op bestelling)
Milieuklasse	XC1; XC2; XC3 (andere op bestelling)
Transportgewicht	550 kg/m ²
Gewicht/ m	6,60 kN/m
Rekengewicht	5,96 kN/m ²
Kanaalvulling	83,37 l/m
Vulbeton	18,80 l/m ²
Betonkwaliteit	C 50/60
Staalkwaliteit	f(pk) 1860; f(p0,1k) 1580

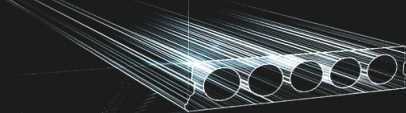
Overspanningen



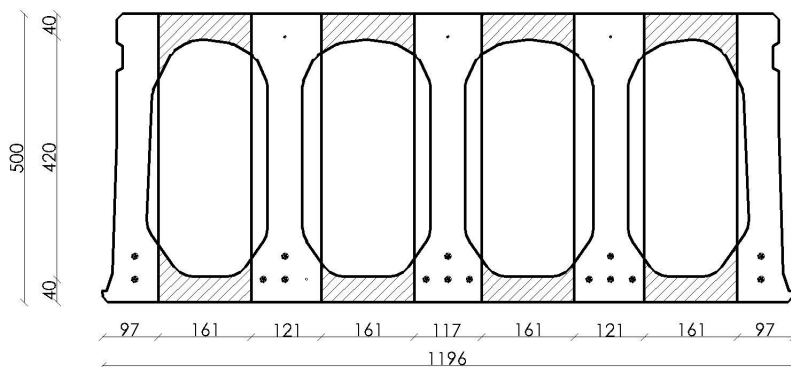


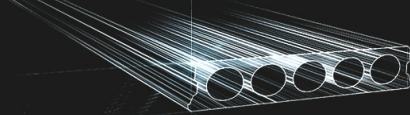
Pasplaten



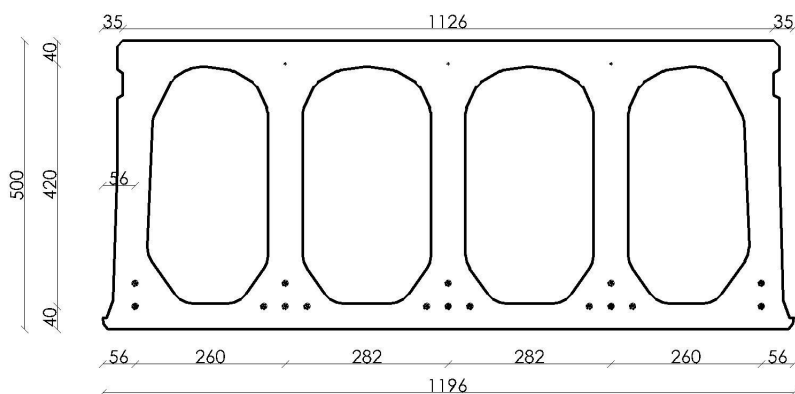


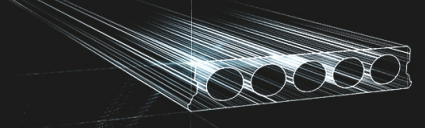
Booradvies



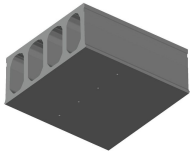


Wapeningspositie

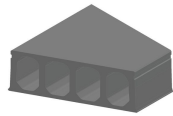




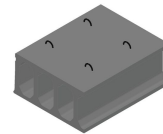
Supplementen



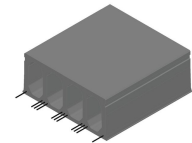
Ontwateringsgaatjes



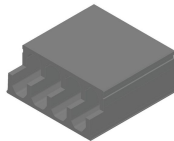
Schuinzagen/inkorten



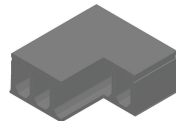
Hijsslussen



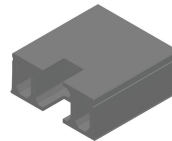
Uitstekende wapening



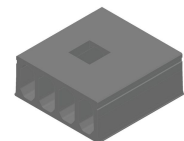
Verdunde bovenzijde



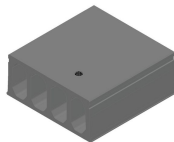
Hoeksparing



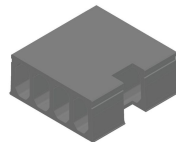
Kopsparing



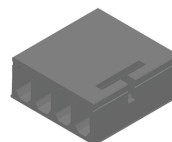
Middensparing



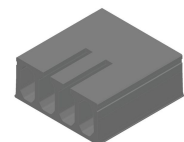
Ronde sparing + CD



Zijsparing



Hamerkop



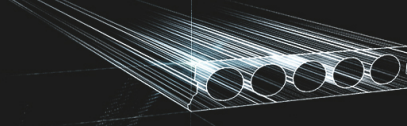
Opengemaakte kanalen



Raveelijzers -
Voorgespannen



Verdiepte sparing



Voorraad

	Productie	Afhaalbaar	Op voorraad
Malle 1			
Malle 2			
Frederickx			
Tessengerlo	X	X	

Gedownload op: 29/04/2021 15:38:50



Fingo
 Malle 1 Nijverheidsstraat 21
 Malle 2 Industrieweg 22
 Malle B-2390
 +32 (0)3 309 26 26

Fingo Tessenderlo
 Truibroek 76
 Ham B-3945

fingo@fingo.be

Fingo - Frederickx
 Schuttersveldstraat 11
 Messelbroek B-3270
 +32 (0)13 78 00 78

pagina 6 / 6