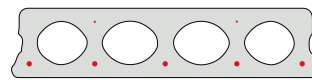


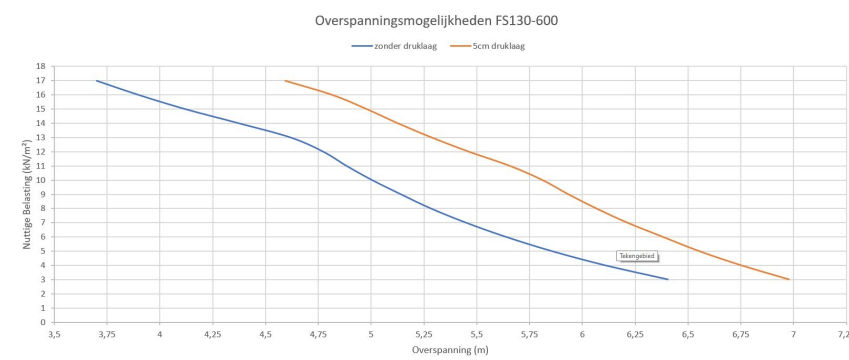
FS130-600

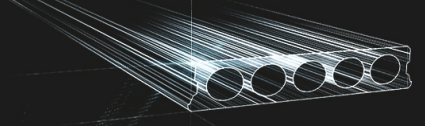


Technische info

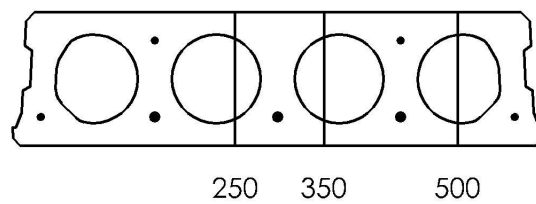
Hoogte	130mm
Breedte	600mm
Brandweerstand	1 uur
Milieuklasse	XC1, XC2, XC3 (andere op bestelling)
Transportgewicht	1,92 kN/m ²
Gewicht/ m	1,15 kN/m
Rekengewicht	2,05 kN/m ²
Kanaalvulling	7,18 l/m
Vulbeton	5,8 l/m ²
Betonkwaliteit	C 50/60
Staalkwaliteit	f(pk) 1860; f(p0,1k) 1580

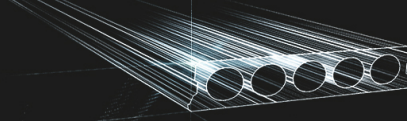
Overspanningen



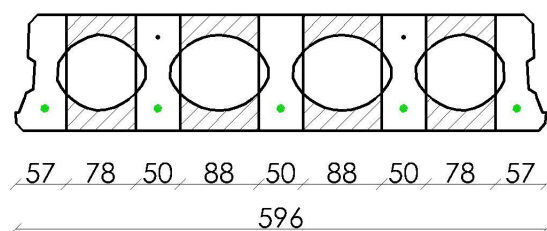


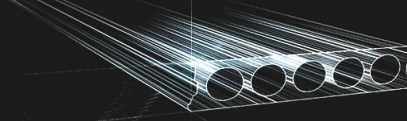
Pasplaten



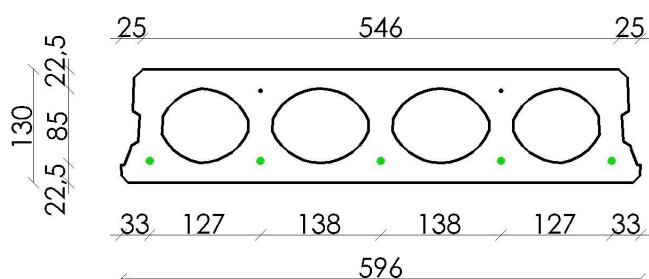


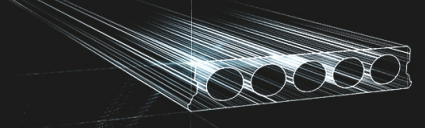
Booradvies



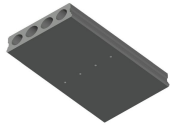


Wapeningspositie

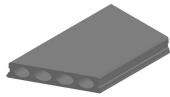




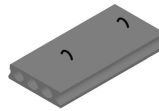
Supplementen



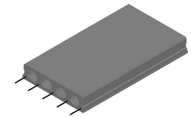
Ontwateringsgaatjes



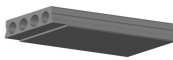
Schuinzagen/inkorten



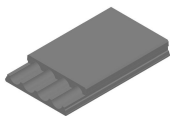
Hijsslussen



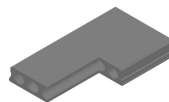
Uitstekende wapening



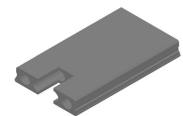
Verdunde onderzijde



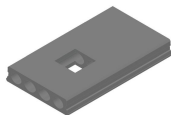
Verdunde bovenzijde



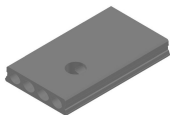
Hoeksparing



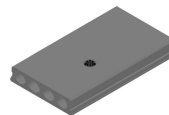
Kopsparing



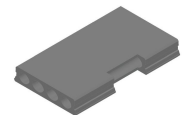
Middensparing



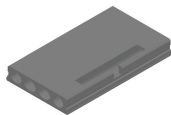
Ronde sparing



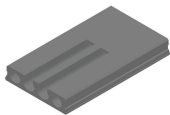
Ronde sparing + CD



Zijsparing



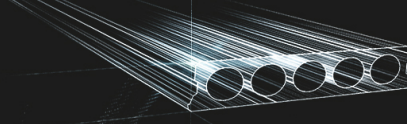
Hamerkop



Opengemaakte kanalen



Raveelijzers -
Voorgespannen



Voorraad

	Productie	Afhaalbaar	Op voorraad
Malle 1			
Malle 2			
Frederickx		X	X
Tessenderlo	X	X	X

Gedownload op: 26/08/2020 02:43:48



Fingo
 Malle 1 Nijverheidsstraat 21
 Malle 2 Industrieweg 22
 Malle B-2390
 +32 (0)3 309 26 26

Fingo Tessenderlo
 Truibroek 76
 Ham B-3945

fingo@fingo.be

Fingo - Frederickx
 Schuttersveldstraat 11
 Messelbroek B-3270
 +32 (0)13 78 00 78

pagina 6 / 6