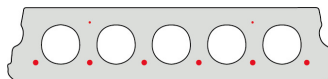


# F130-600

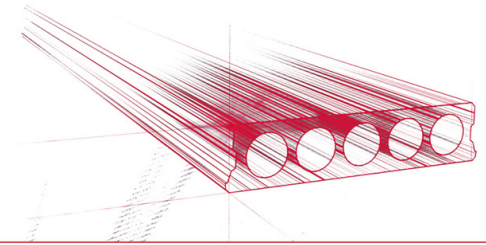


## Informations techniques

Epaisseur	130mm
Largeur	600mm
Longueur	Armature S350: 0,70m => 5,20m de stock (par 10 cm) Armature S700: 1,90m => 5,20m de stock (par 10 cm)
Résistance au feu	1 heure (2 heures sur commande)
Classes d'exposition	XC1
Poids au transport	2,12 kN/m <sup>2</sup>
Poids/ m	1,27 kN/m
Poids de calcul	2,30 kN/m <sup>2</sup> (incl. béton de remplissage)
Remplissage d'alvéole	3,85 l/m
Béton de remplissage	7 l/m <sup>2</sup>
Qualité du béton	C 40/50
Qualité d'acier	f(yk) 500; f(tk) 550
Étaielement	à partir de 3,80 m

## Keurmerken





## Travées

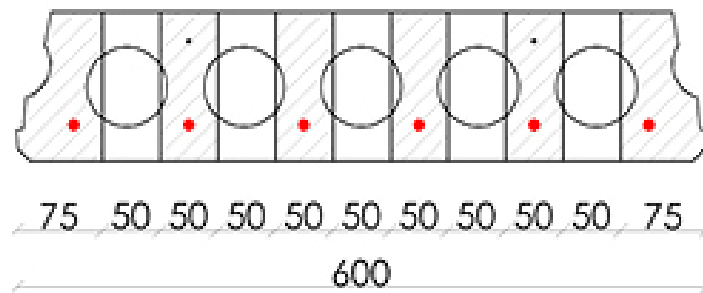
---

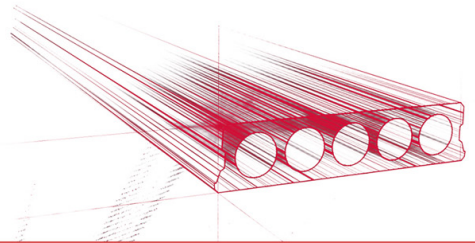
Zie hiervoor onze online rekenmodule



## Conseil de forage

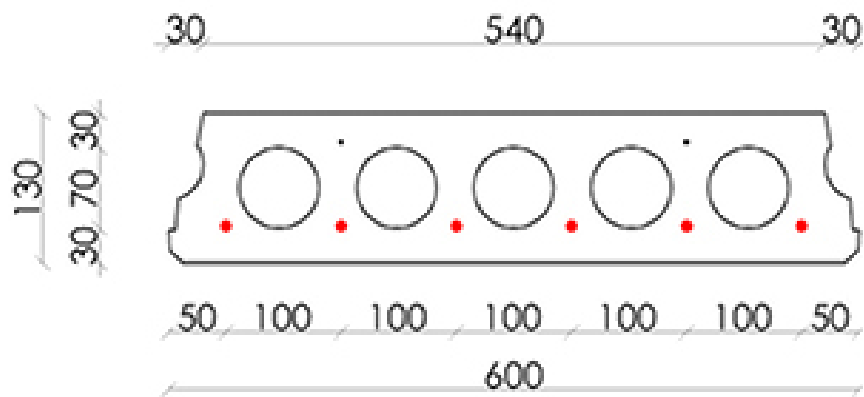
---





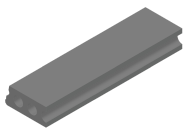
## Position d'armature

---

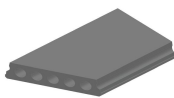




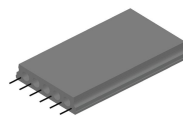
## Suppléments



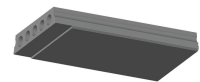
Pasplatten - Gewapend



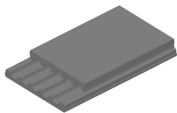
Sciage en coupe oblique



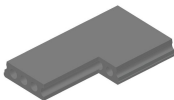
Armatures dépassantes



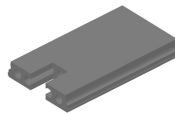
Amincissement inférieur



Amincissement supérieur



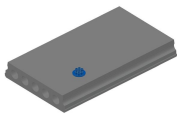
Evidement angulaire



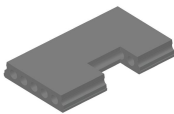
Evidement de tête



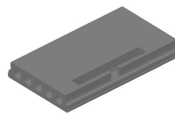
Evidement Ø90



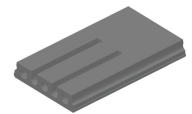
Evidement Ø90 + boîte de dérivation



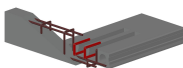
Evidement latéral



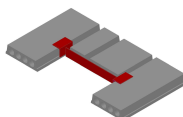
Tête de marteau



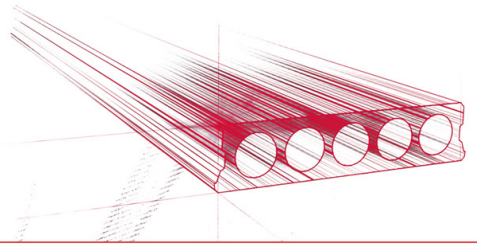
Alvéoles ouvertes



Alvéoles ouvertes et armatures d'ancrage



Chevêtre métallique - Armé



## Stock

	Production	Emporter	Stock
Malle 1	X	X	X
Malle 2			
Frederickx			
Tessengerlo			

