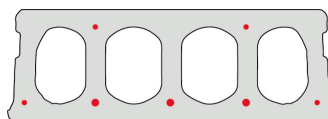


FS200-600

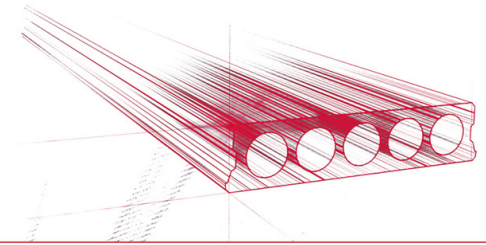


Informations techniques

Epaisseur	200mm
Largeur	596mm
Longueur	Armature S500: 0,70m => 9.00m sur commande (par 10cm)
Résistance au feu	1 heure & 2 heures sur commande
Classes d'exposition	XC1, XC2, XC3 (d'autres sur commande)
Poids au transport	2,92 kN/m ²
Poids/ m	1,75 kN/m
Poids de calcul	3,15 kN/m ² (incl. béton de remplissage)
Remplissage d'alvéole	12,69 l/m
Béton de remplissage	9,2 l/m ²
Qualité du béton	C 50/60
Qualité d'acier	f(pk) 1860

Keurmerken

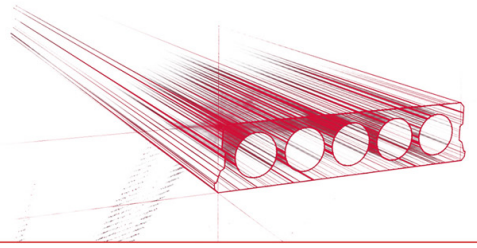




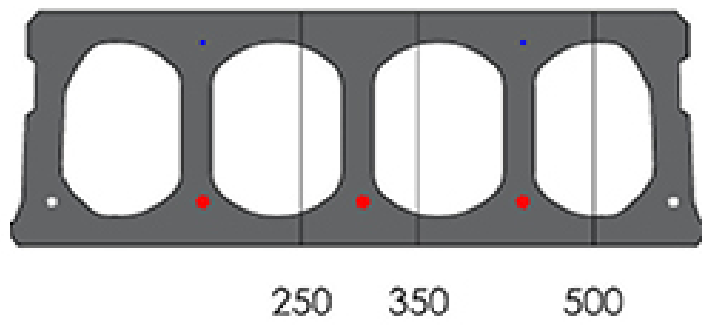
Travées

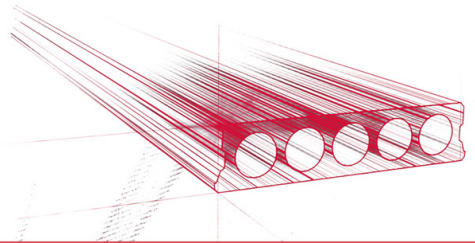
Zie hiervoor onze online rekenmodule



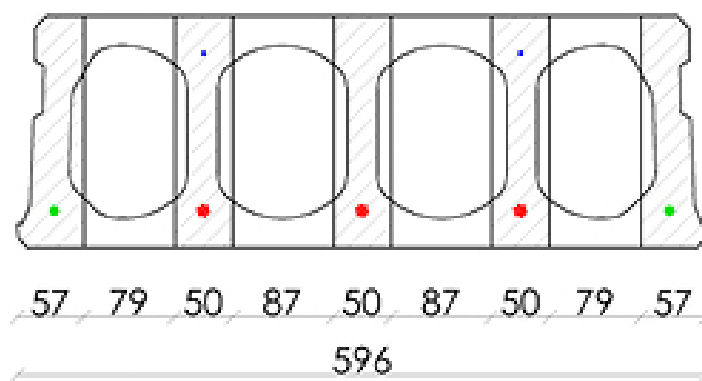


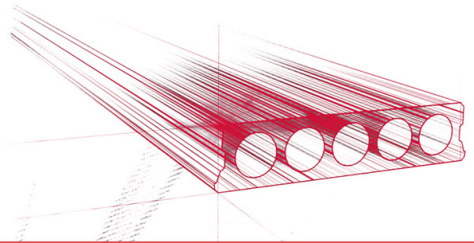
Plaques d'ajustage



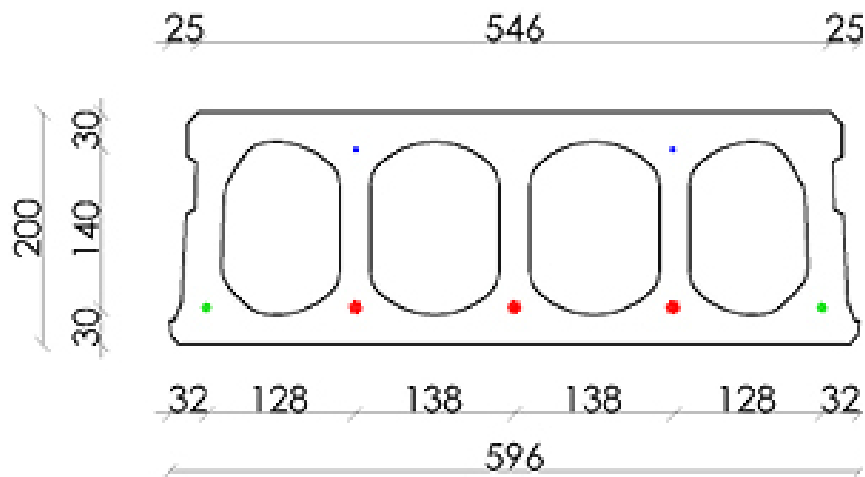


Conseil de forage

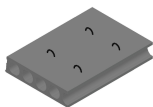




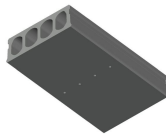
Position d'armature



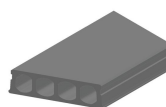
Suppléments



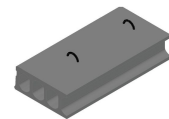
Pasplatten -
Voorgespannen



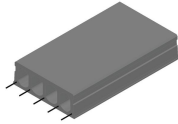
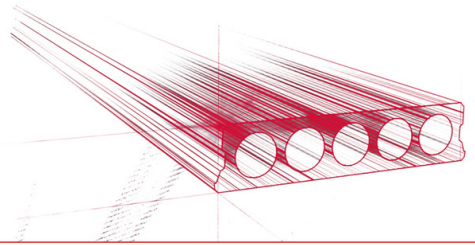
Trous de drainage d'eau



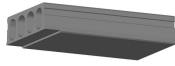
Sciage en coupe oblique



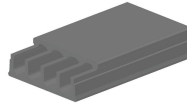
Boucles de levage



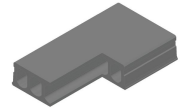
Armatures dépassantes



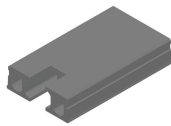
Amincissement inférieur



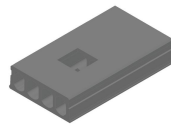
Amincissement supérieur



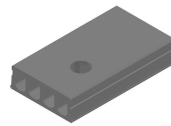
Evidement angulaire



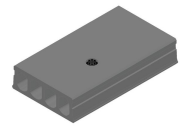
Evidement de tête



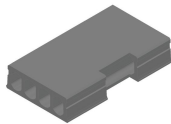
Evidement central



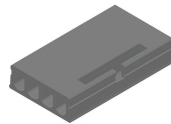
Evidement Ø90



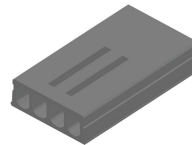
Evidement Ø90 + boîte de dérivation



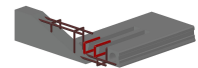
Evidement latéral



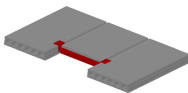
Tête de marteau



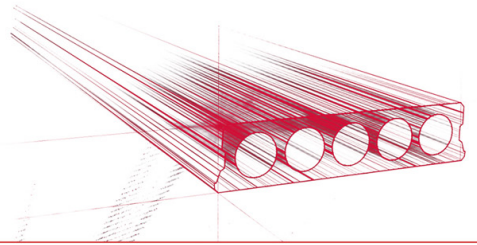
Alvéoles ouvertes



Alvéoles ouvertes et armatures d'ancrage



Chevêtre métallique - Précontraints



Stock

	Production	Emporter	Stock
Malle 1		X	X
Malle 2			
Frederickx			
Tessenderlo			

