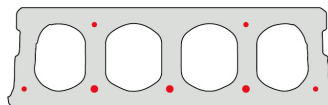


FS180-600

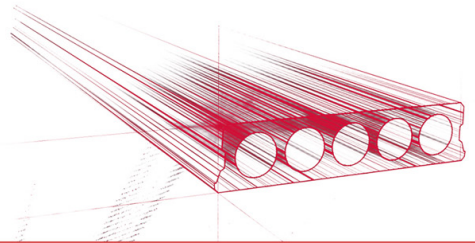


Informations techniques

Epaisseur	180mm
Largeur	596mm
Longueur	Armature S500: 0,70m => 5,50m sur commande (par 10 cm) Armature S500: 5,60m => 7,60m de stock (par 10 cm) Armature S500: 7,70m => 8,00 m sur commande (par 10 cm)
Résistance au feu	1 heure (2 heures sur commande)
Classes d'exposition	XC1, XC2, XC3 (d'autres sur commande)
Poids au transport	2,68 kN/m ²
Poids/ m	1,61 kN/m
Poids de calcul	2,88 kN/m ² (incl. béton de remplissage)
Remplissage d'alvéole	11,06 l/m
Béton de remplissage	8,2l/m ²
Qualité du béton	C 50/60
Qualité d'acier	f(pk) 1860

Keurmerken

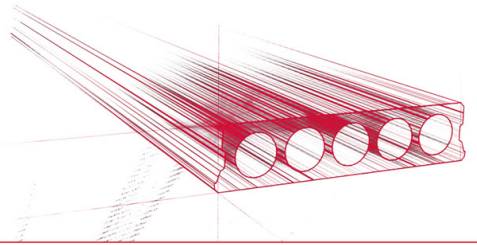




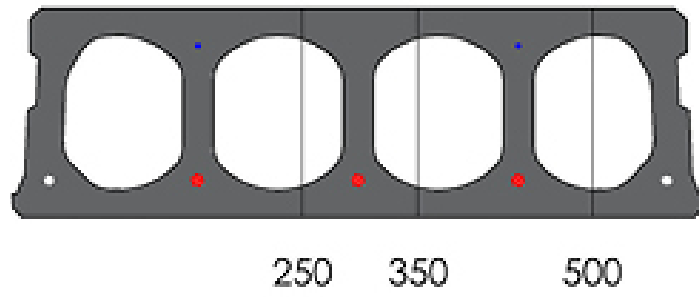
Travées

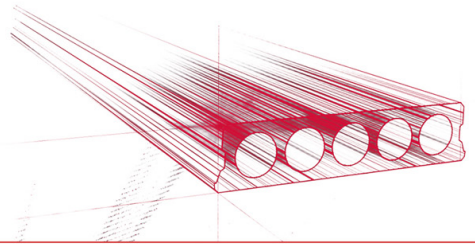
Zie hiervoor onze online rekenmodule



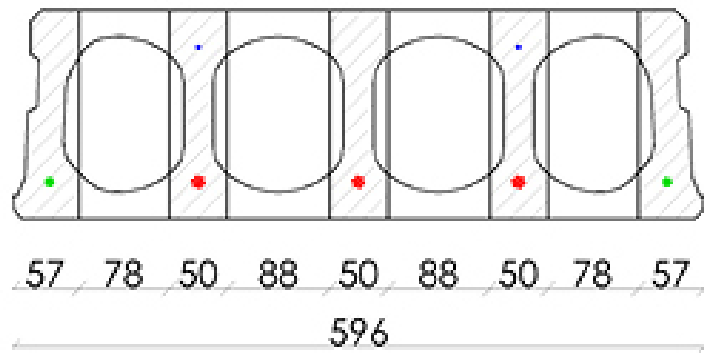


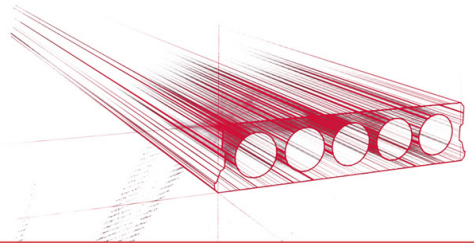
Plaques d'ajustage



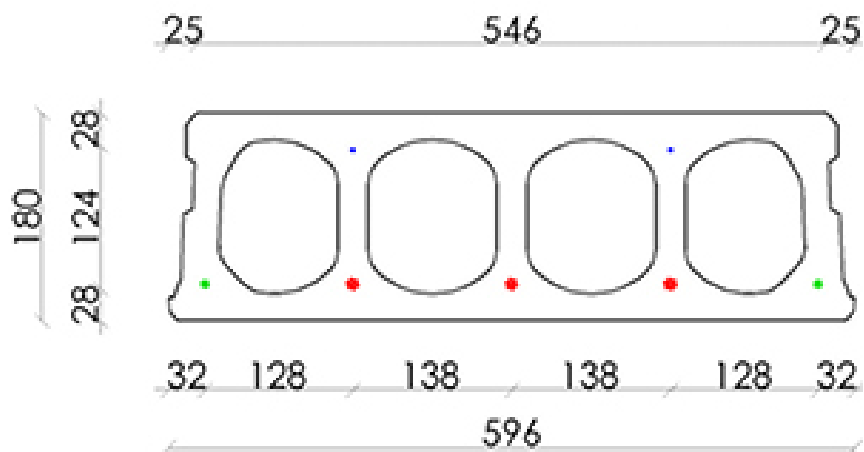


Conseil de forage

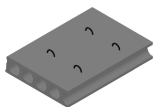




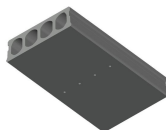
Position d'armature



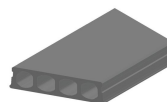
Suppléments



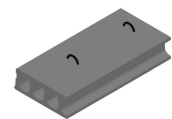
Pasplatten -
Voorgespannen



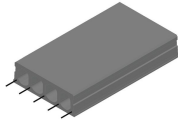
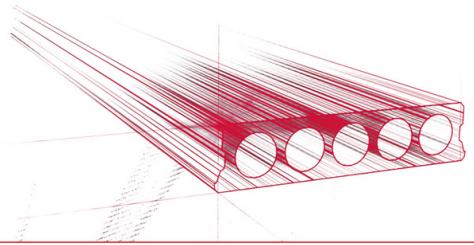
Trous de drainage d'eau



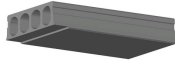
Sciage en coupe oblique



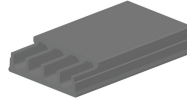
Boucles de levage



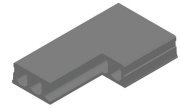
Armatures dépassantes



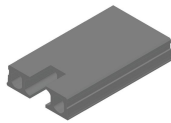
Amincissement inférieur



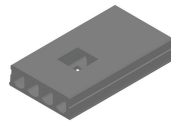
Amincissement supérieur



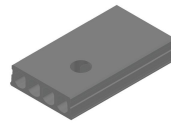
Evidement angulaire



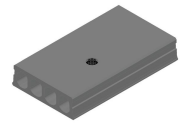
Evidement de tête



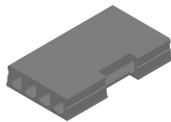
Evidement central



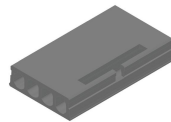
Evidement Ø90



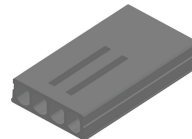
Evidement Ø90 + boîte de dérivation



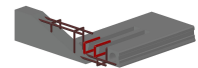
Evidement latéral



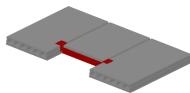
Tête de marteau



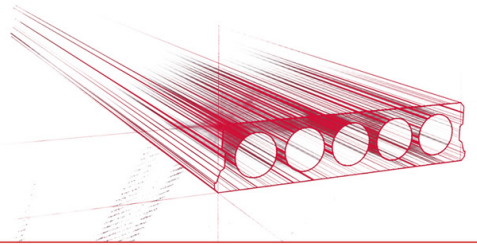
Alvéoles ouvertes



Alvéoles ouvertes et armatures d'ancrage



Chevêtre métallique - Précontraints



Stock

	Production	Emporter	Stock
Malle 1		X	X
Malle 2			
Frederickx			
Tessengerlo			

