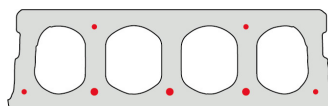
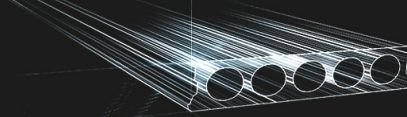


FS180-600

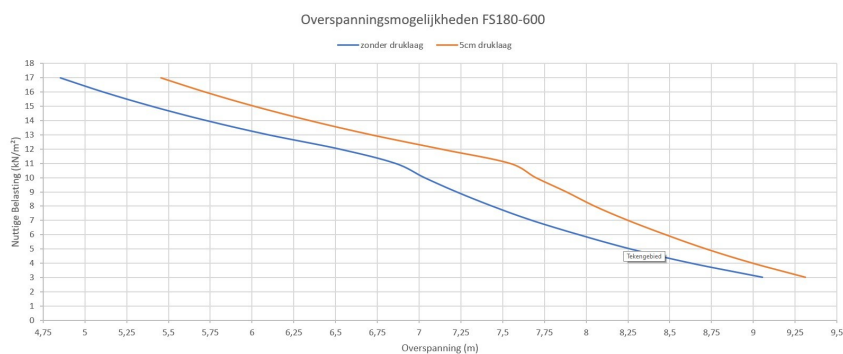


Technische info

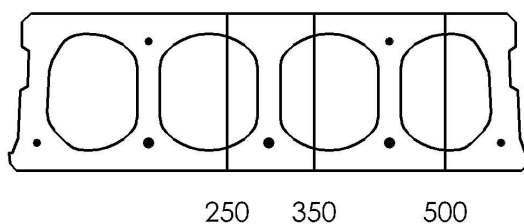
| | |
|------------------|------------------------------------------------------------------------------------------------------------------------------------------------------------------------------------------|
| Hoogte | 180mm |
| Breedte | 596mm |
| Lengte | Wap. S500: 0,70m => 5,40m op bestelling (per 10cm oplopend) Wap. S500: 5,50m => 7,60m uit voorraad (per 10cm oplopend) Wap. S500: 7,70m => 8,50m op bestelling (per 10cm oplopend) |
| Brandweerstand | 1 uur (2u op bestelling) |
| Milieuklasse | XC1; XC2; XC3 (andere op bestelling) |
| Transportgewicht | 2,68 kN/m ² |
| Gewicht/ m | 1,61 kN/m |
| Rekengewicht | 2,88 kN/m ² |
| Kanaalvulling | 11,06 l/m |
| Vulbeton | 8,2 l/m ² |
| Betonkwaliteit | C 50/60 |
| Staalkwaliteit | f(pk) 1860; f(p0,1k) 1580 |

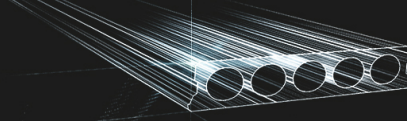


Overspanningen

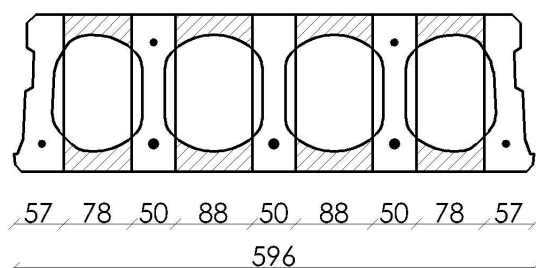


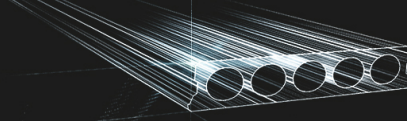
Pasplaten



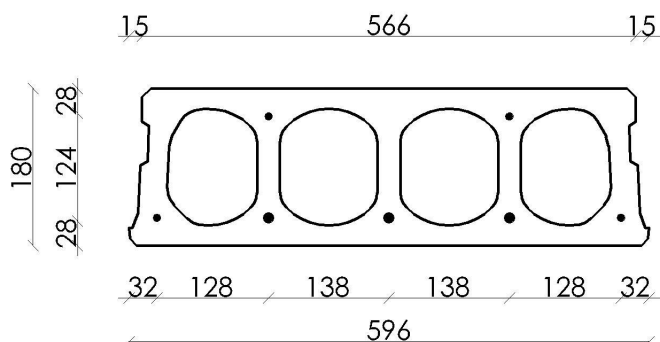


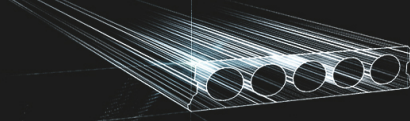
Booradvies



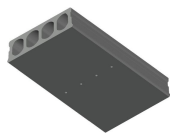


Wapeningspositie

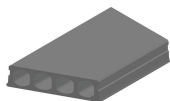




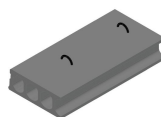
Supplementen



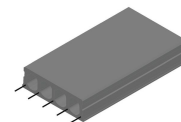
Ontwateringsgaatjes



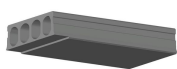
Schuinzagen/inkorten



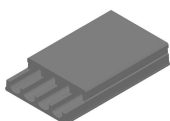
Hijsslussen



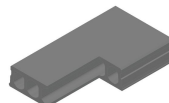
Uitstekende wapening



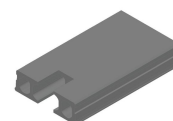
Verdunde onderzijde



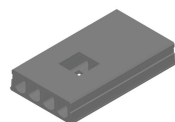
Verdunde bovenzijde



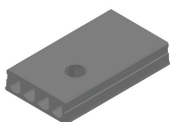
Hoeksparing



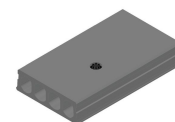
Kopsparing



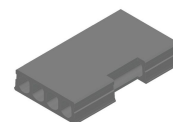
Middensparing



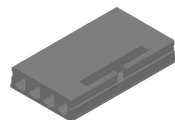
Ronde sparing



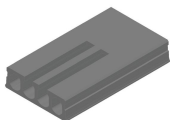
Ronde sparing + CD



Zijsparing



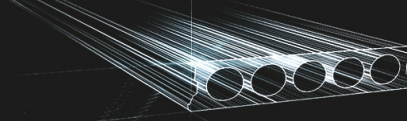
Hamerkop



Opengemaakte kanalen



Raveelijzers -
Voorgespannen



Voorraad

| | Productie | Afhaalbaar | Op voorraad |
|-------------|-----------|------------|-------------|
| Malle 1 | | X | X |
| Malle 2 | X | X | |
| Frederickx | | | |
| Tessenderlo | X | X | X |

Gedownload op: 26/08/2020 02:53:54



Fingo
 Malle 1 Nijverheidsstraat 21
 Malle 2 Industrieweg 22
 Malle B-2390
 +32 (0)3 309 26 26

Fingo Tessenderlo
 Truibroek 76
 Ham B-3945

fingo@fingo.be

Fingo - Frederickx
 Schuttersveldstraat 11
 Messelbroek B-3270
 +32 (0)13 78 00 78

pagina 6 / 6