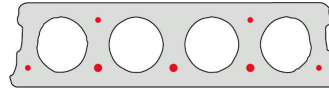
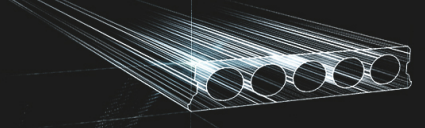


FS150-600

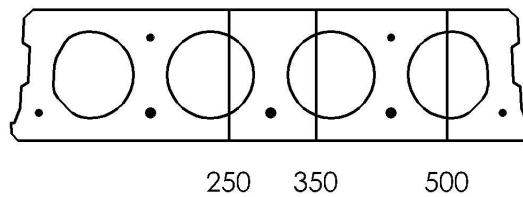


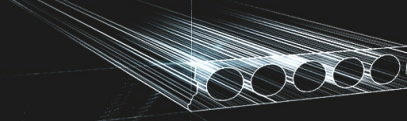
Technische info

Hoogte	150mm
Breedte	596mm
Lengte	Wap. S500: 0,70m => 4,90m op bestelling (per 10cm oplopend) Wap. S500: 5,00m => 6,90m uit voorraad (per 10cm oplopend) Wap. S500: 7,00m => 7,30m op bestelling (per 10cm oplopend)
Brandweerstand	1 uur (2u op bestelling)
Milieuklasse	XC1; XC2; XC3 (andere op bestelling)
Transportgewicht	2,38 kN/m ²
Gewicht/ m	1,43 kN/m
Rekengewicht	2,55 kN/m ²
Kanaalvulling	7,85 l/m
Vulbeton	6,7 l/m ²
Betonkwaliteit	C 50/60
Staalkwaliteit	f(pk) 1860; f(p0,1k) 1580

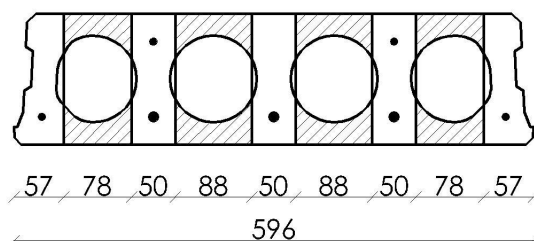


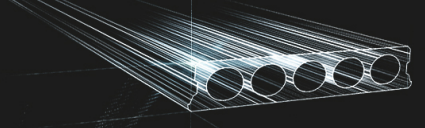
Pasplaten



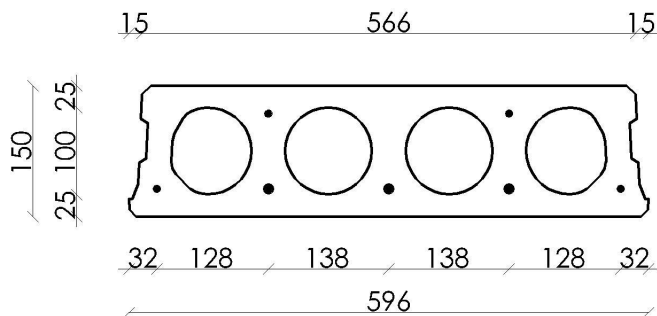


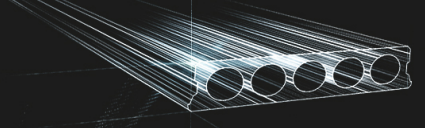
Booradvies



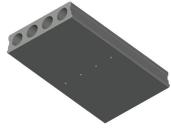


Wapeningspositie

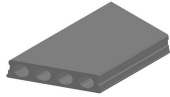




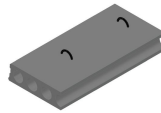
Supplementen



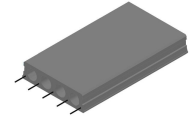
Ontwateringsgaatjes



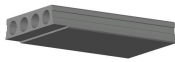
Schuinzagen/inkorten



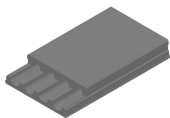
Hijsslussen



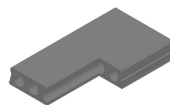
Uitstekende wapening



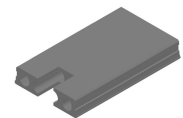
Verdunde onderzijde



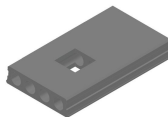
Verdunde bovenzijde



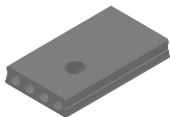
Hoeksparing



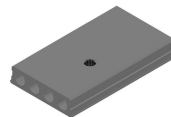
Kopsparing



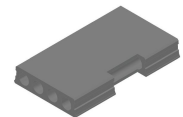
Middensparing



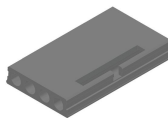
Ronde sparing



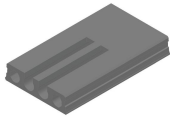
Ronde sparing + CD



Zijsparing



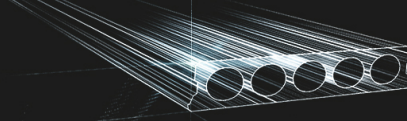
Hamerkop



Opengemaakte kanalen



Raveelijzers -
Voorgespannen



Voorraad

	Productie	Afhaalbaar	Op voorraad
Malle 1		X	X
Malle 2	X	X	
Frederickx			
Tessenderlo	X	X	X

Gedownload op: 29/04/2021 15:35:18



Fingo
 Malle 1 Nijverheidsstraat 21
 Malle 2 Industrieweg 22
 Malle B-2390
 +32 (0)3 309 26 26

Fingo Tessenderlo
 Truibroek 76
 Ham B-3945

fingo@fingo.be

Fingo - Frederickx
 Schuttersveldstraat 11
 Messelbroek B-3270
 +32 (0)13 78 00 78

pagina 6 / 6