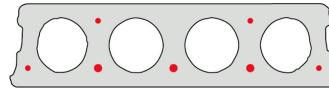


# FS150-600

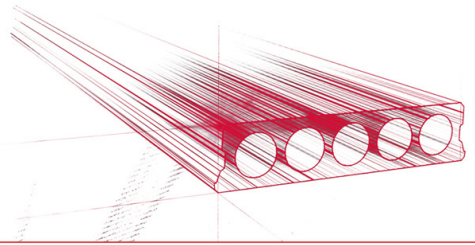


## Informations techniques

Epaisseur	150mm
Largeur	596mm
Longueur	Malle 1 : Armature S500: 3,40m => 4,90m de stock (par 10 cm) Tessengerlo : Armature S500: 3,40m => 4,90m sur commande (par 10 cm) Armature S500: 5,00m => 7,00m de stock (par 10 cm)
Résistance au feu	1 heure (2 heures sur commande)
Classes d'exposition	XC1, XC2, XC3 (d'autres sur commande)
Poids au transport	2,38 kN/m <sup>2</sup>
Poids/ m	1,43 kN/m
Poids de calcul	2,55 kN/m <sup>2</sup> (incl. béton de remplissage)
Remplissage d'alvéole	7,85 l/m
Béton de remplissage	6,7 l/m <sup>2</sup>
Qualité du béton	C 50/60
Qualité d'acier	f(pk) 1860

## Keurmerken



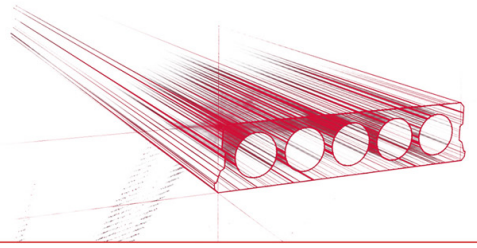


## Travées

---

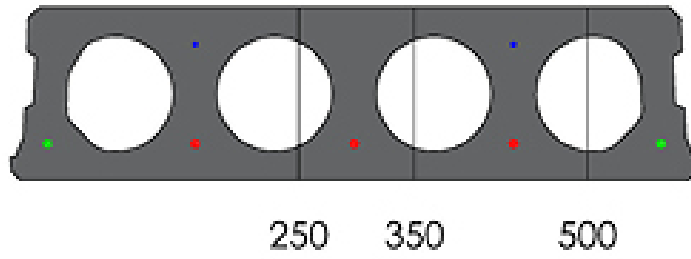
Zie hiervoor onze online rekenmodule

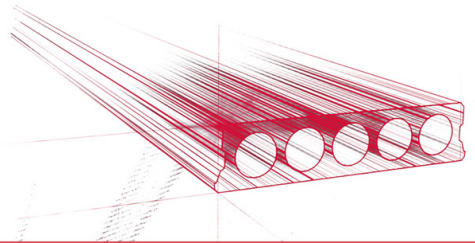




## Plaques d'ajustage

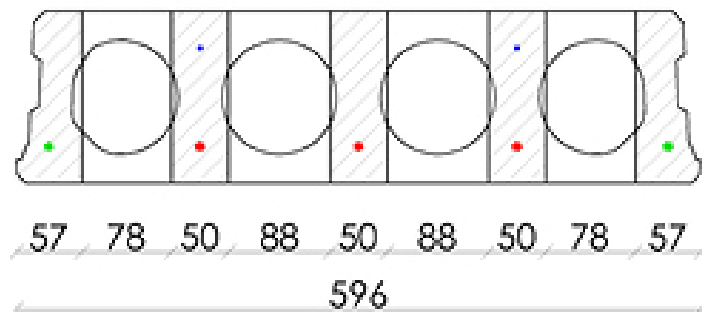
---

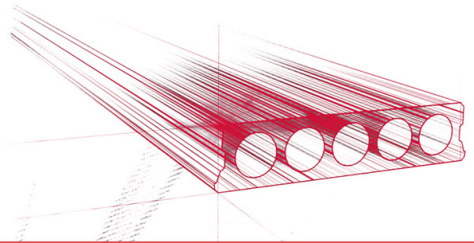




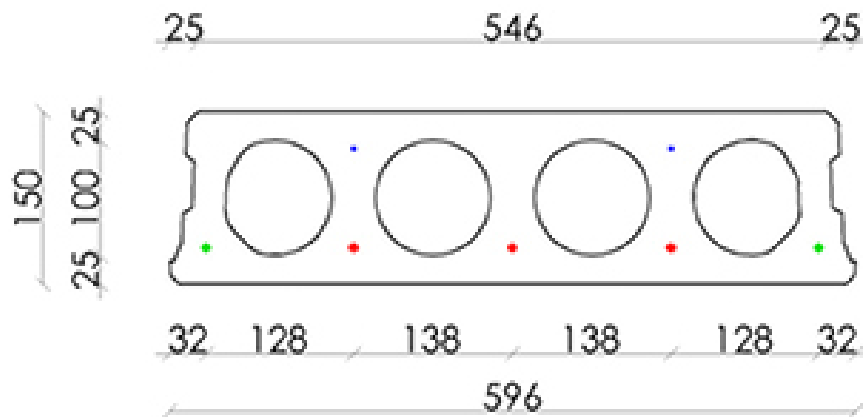
## Conseil de forage

---

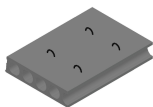




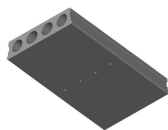
## Position d'armature



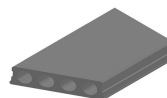
## Suppléments



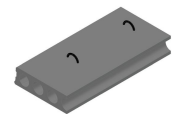
Pasplatten -  
Voorgespannen



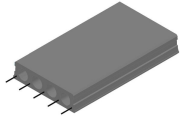
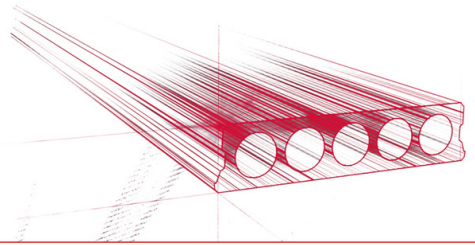
Trous de drainage d'eau



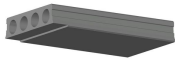
Sciage en coupe oblique



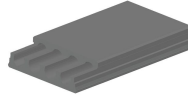
Boucles de levage



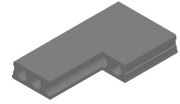
Armatures dépassantes



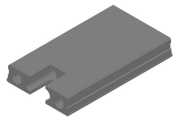
Amincissement inférieur



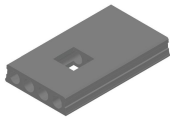
Amincissement supérieur



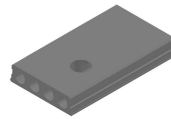
Evidement angulaire



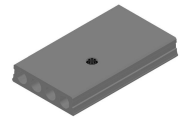
Evidement de tête



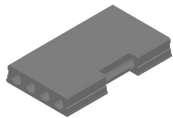
Evidement central



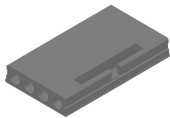
Evidement Ø90



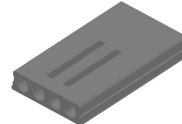
Evidement Ø90 + boîte de dérivation



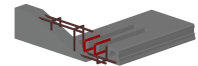
Evidement latéral



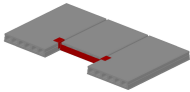
Tête de marteau



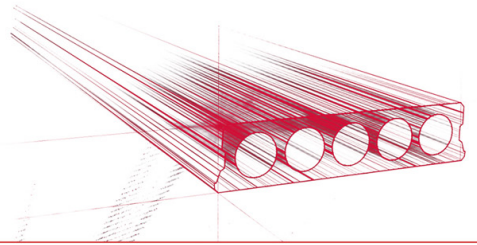
Alvéoles ouvertes



Alvéoles ouvertes et armatures d'ancrage



Chevêtre métallique - Précontraints



## Stock

	Production	Emporter	Stock
Malle 1		X	X
Malle 2			
Frederickx			
Tessenderlo	X	X	X

