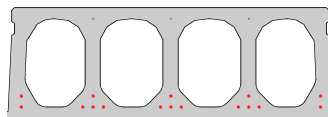


FS400-1200

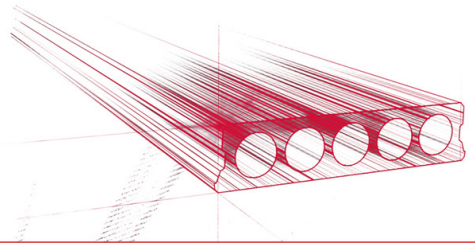


Informations techniques

Epaisseur	400mm
Largeur	1200mm
Résistance au feu	1 heure (2 heures sur commande)
Classes d'exposition	XC1, XC2, XC3 (d'autres sur commande)
Poids au transport	4,32 kN/m ²
Poids/ m	5,18 kN/m
Poids de calcul	4,65 kN/m ² (incl. béton de remplissage)
Remplissage d'alvéole	64,23 l/m
Béton de remplissage	13,6 l/m ²
Qualité du béton	C 50/60
Qualité d'acier	f(pk) 1860

Keurmerken



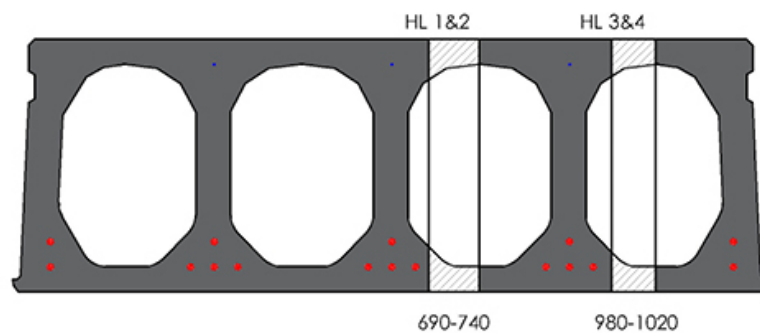


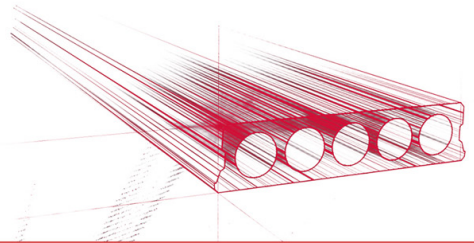
Travées

Zie hiervoor onze online rekenmodule

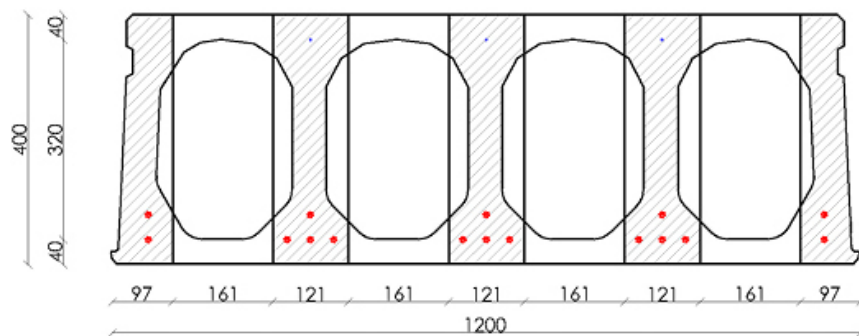


Plaques d'ajustage

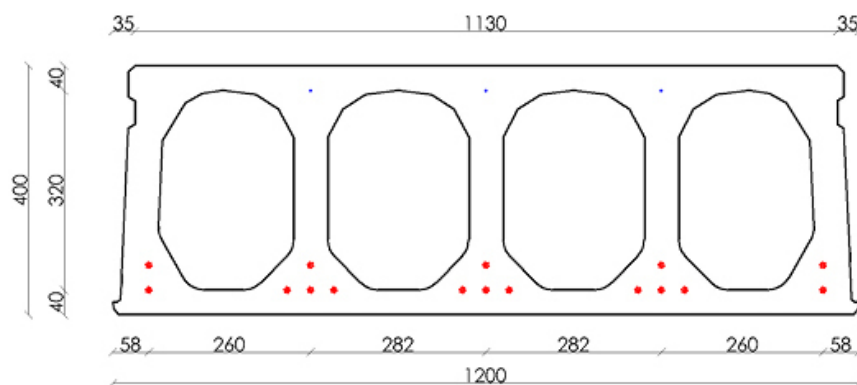


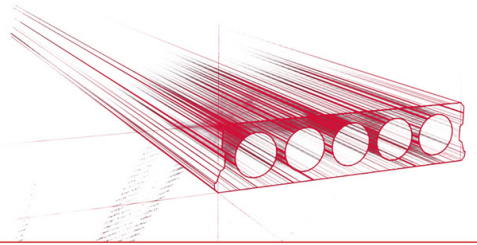


Conseil de forage

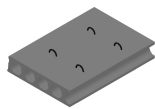


Position d'armature

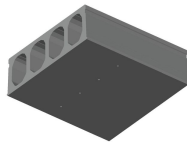




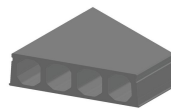
Suppléments



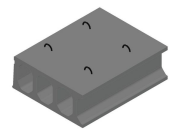
Pasplatten -
Voorgespannen



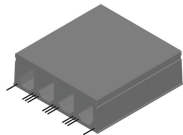
Trous de drainage d'eau



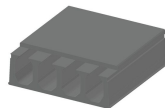
Sciage en coupe oblique



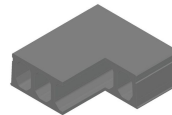
Boucles de levage



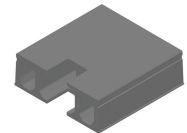
Armatures dépassantes



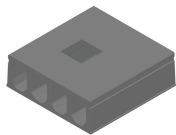
Amincissement
supérieur



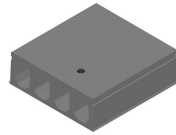
Evidement angulaire



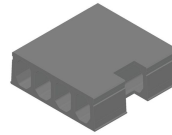
Evidement de tête



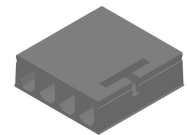
Evidement central



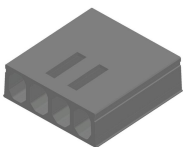
Evidement Ø90 + boîte
de dérivation



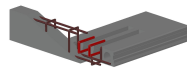
Evidement latéral



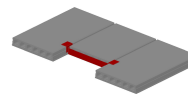
Tête de marteau



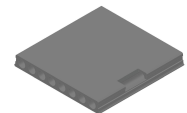
Alvéoles ouvertes



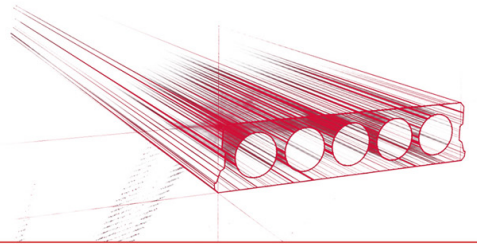
Alvéoles ouvertes et
armatures d'ancrage



Chevêtre métallique -
Précontraints



Évidement partiel



Stock

	Production	Emporter	Stock
Malle 1			
Malle 2	X	X	
Frederickx			
Tessenderlo	X	X	

