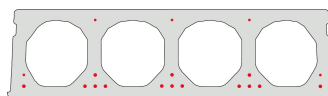


# FS320-1200

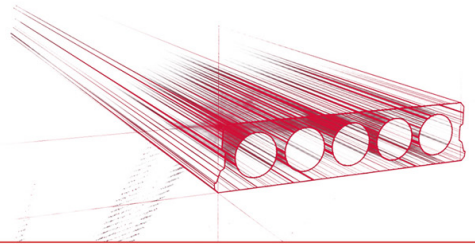


## Informations techniques

Epaisseur	320mm
Largeur	1200mm
Résistance au feu	1 heure (2 heures sur commande)
Classes d'exposition	XC1, XC2, XC3 (d'autres sur commande)
Poids au transport	3,78 kN/m <sup>2</sup>
Poids/ m	4,54 kN/m
Poids de calcul	4,04 kN/m <sup>2</sup> (incl. béton de remplissage)
Remplissage d'alvéole	46,66 l/m
Béton de remplissage	10,3 l/m <sup>2</sup>
Qualité du béton	C 50/60
Qualité d'acier	f(pk) 1860

## Keurmerken





## Travées

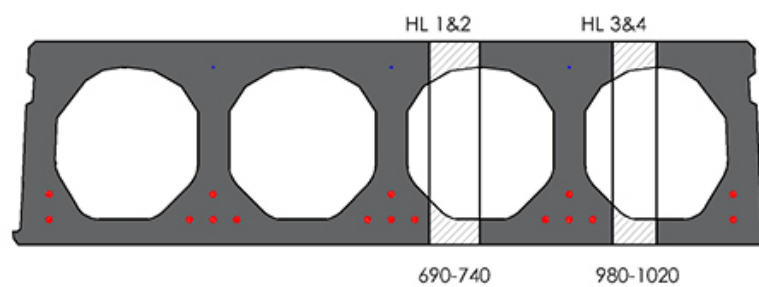
---

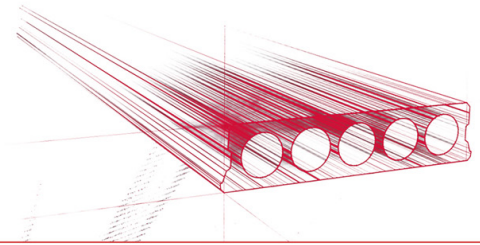
Zie hiervoor onze online rekenmodule



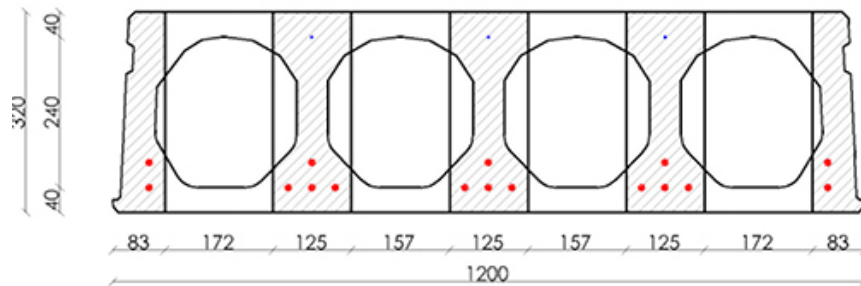
## Plaques d'ajustage

---

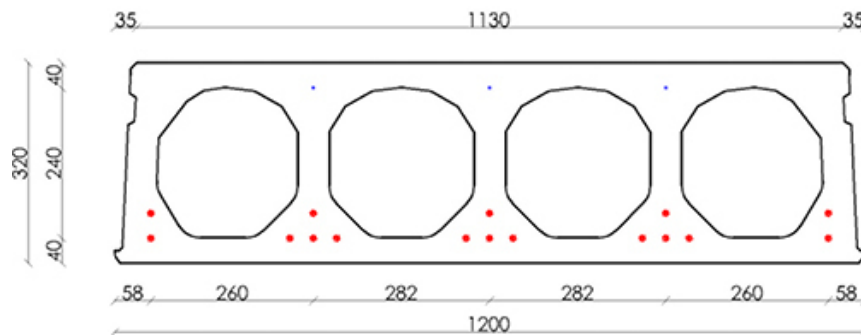


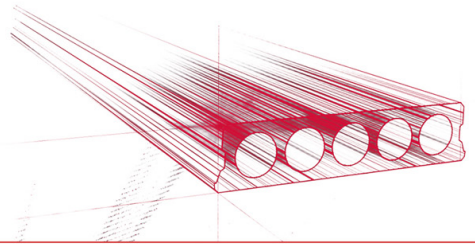


## Conseil de forage

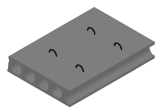


## Position d'armature

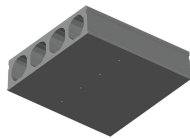




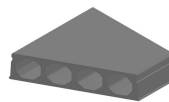
## Suppléments



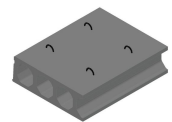
Pasplaten -  
Voorgespannen



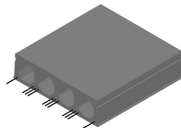
Trous de drainage d'eau



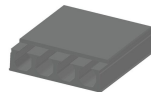
Sciage en coupe oblique



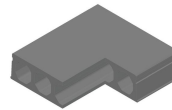
Boucles de levage



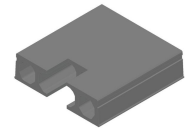
Armatures dépassantes



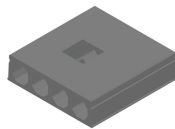
Amincissement  
supérieur



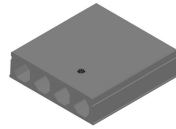
Evidement angulaire



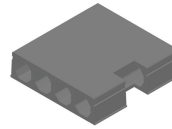
Evidement de tête



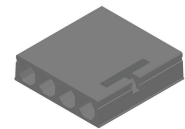
Evidement central



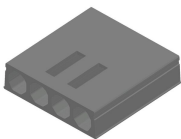
Evidement  $\varnothing 90$  + boîte  
de dérivation



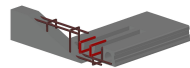
Evidement latéral



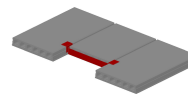
Tête de marteau



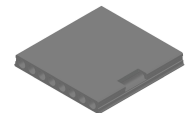
Alvéoles ouvertes



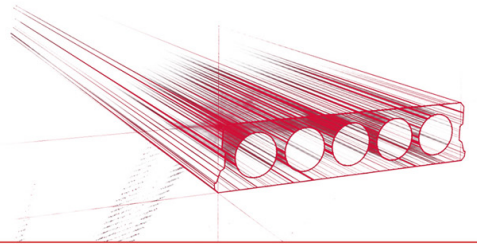
Alvéoles ouvertes et  
armatures d'ancrage



Chevêtre métallique -  
Précontraints



Évidement partiel



## Stock

	Production	Emporter	Stock
Malle 1			
Malle 2	X	X	
Frederickx			
Tessenderlo	X	X	

