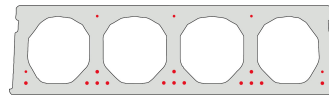


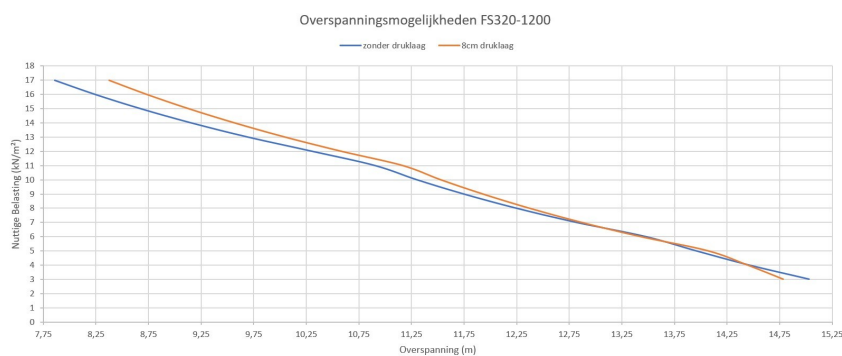
FS320-1200

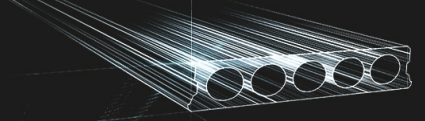


Technische info

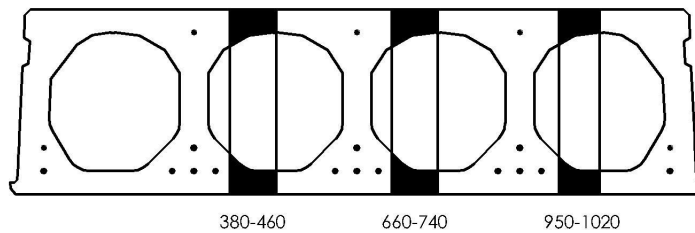
Hoogte	320mm
Breedte	1200mm
Brandweerstand	1 uur (2u op bestelling)
Milieuklasse	XC1; XC2; XC3 (andere op bestelling)
Transportgewicht	3,78 kN/m ²
Gewicht/ m	4,54 kN/m
Rekengewicht	4,04 kN/m ²
Kanaalvulling	46,66 l/m
Vulbeton	10,3 l/m ²
Betonkwaliteit	C 50/60
Staalkwaliteit	f(pk) 1860; f(p0,1k) 1580

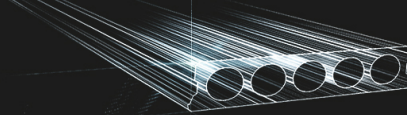
Overspanningen



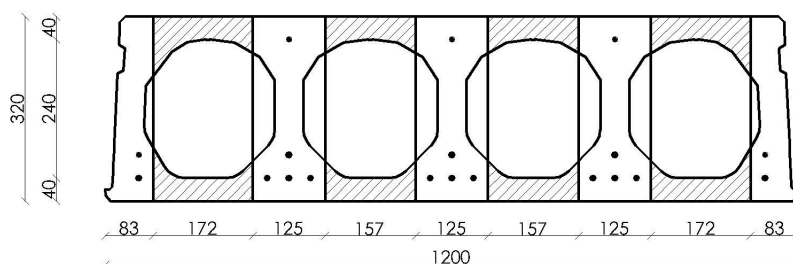


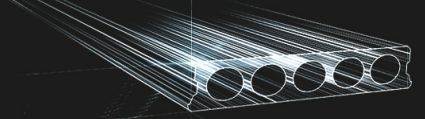
Pasplaten



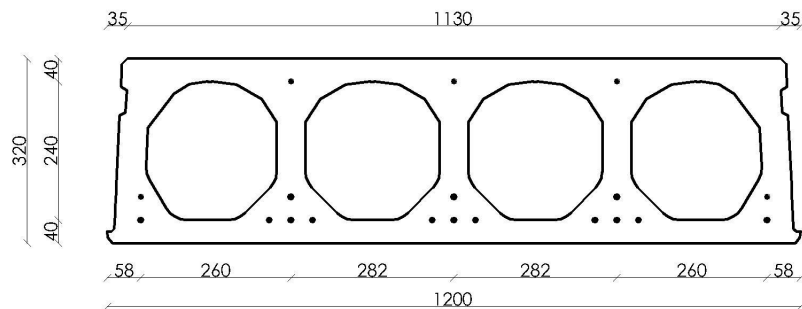


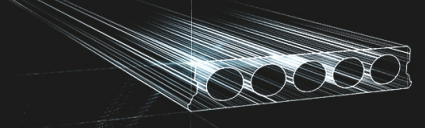
Booradvies



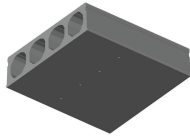


Wapeningspositie

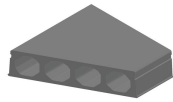




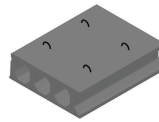
Supplementen



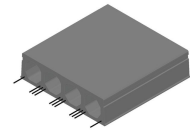
Ontwateringsgaatjes



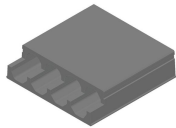
Schuinzagen/inkorten



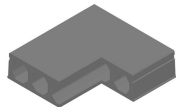
Hijsslussen



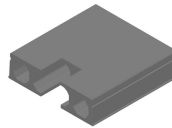
Uitstekende wapening



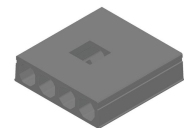
Verdunde bovenzijde



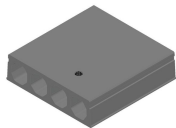
Hoeksparing



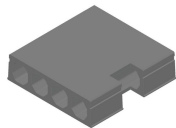
Kopsparing



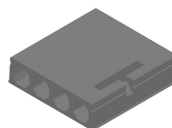
Middensparing



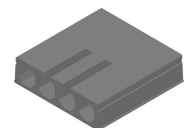
Ronde sparing + CD



Zijsparing

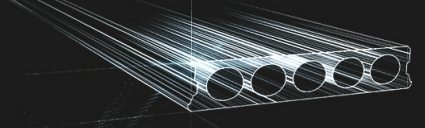


Hamerkop



Opengemaakte kanalen

Raveelijzers -
Voorgespannen



Voorraad

	Productie	Afhaalbaar	Op voorraad
Malle 1			
Malle 2	X	X	
Frederickx			
Tessenderlo	X	X	

Gedownload op: 02/06/2020 03:20:02



Fingo
Malle 1 Nijverheidsstraat 21
Malle 2 Industrieweg 22
Malle B-2390
+32 (0)3 309 26 26

Fingo Tessenderlo
Truibroek 76
Ham B-3945

fingo@fingo.be

Fingo - Frederickx
Schuttersveldstraat 11
Messelbroek B-3270
+32 (0)13 78 00 78

pagina 6 / 6