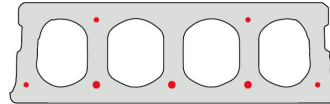
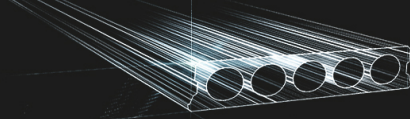


FS180-600

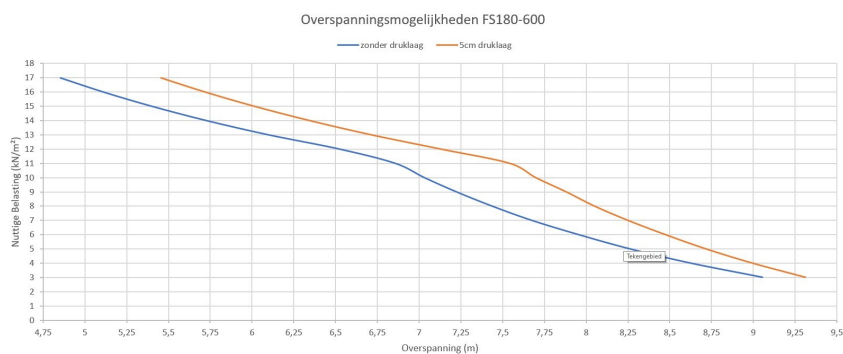


Technische info

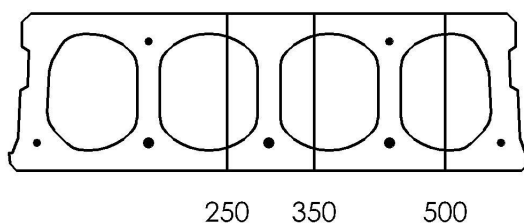
Hoogte	180mm
Breedte	596mm
Lengte	Wap. S500: 0,70m => 5,40m op bestelling (per 10cm oplopend) Wap. S500: 5,50m => 7,60m uit voorraad (per 10cm oplopend) Wap. S500: 7,70m => 8,50m op bestelling (per 10cm oplopend)
Brandweerstand	1 uur (2u op bestelling)
Milieuklasse	XC1; XC2; XC3 (andere op bestelling)
Transportgewicht	2,68 kN/m ²
Gewicht/ m	1,61 kN/m
Rekengewicht	2,88 kN/m ²
Kanaalvulling	11,06 l/m
Vulbeton	8,2 l/m ²
Betonkwaliteit	C 50/60
Staalkwaliteit	f(pk) 1860; f(p0,1k) 1580

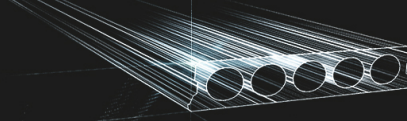


Overspanningen

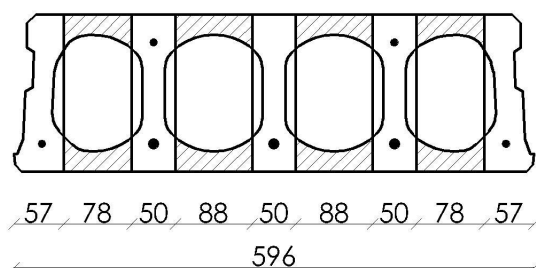


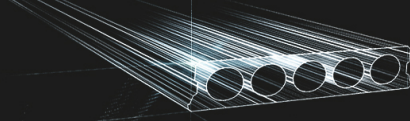
Pasplaten



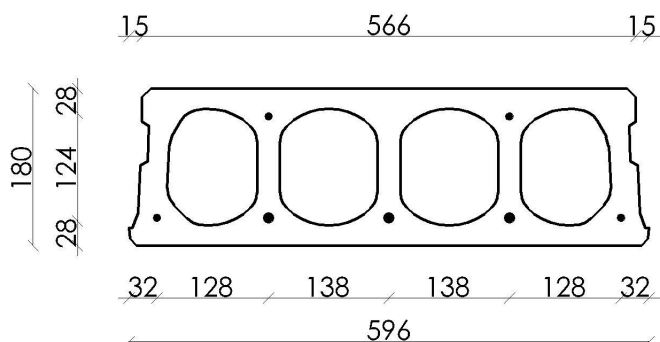


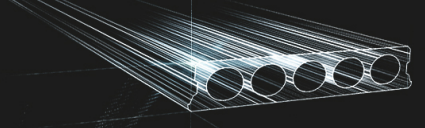
Booradvies



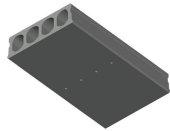


Wapeningspositie

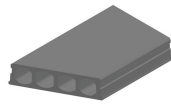




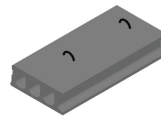
Supplementen



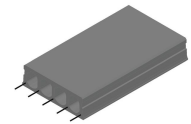
Ontwateringsgaatjes



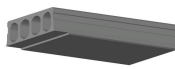
Schuinzagen/inkorten



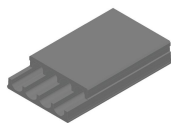
Hijsslussen



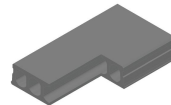
Uitstekende wapening



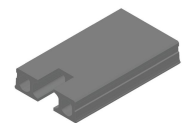
Verdunde onderzijde



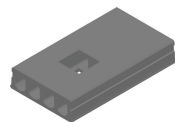
Verdunde bovenzijde



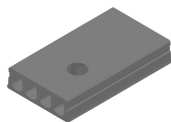
Hoeksparing



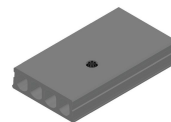
Kopsparing



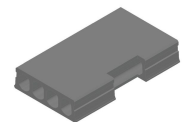
Middensparing



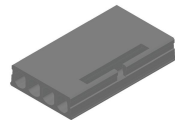
Ronde sparing



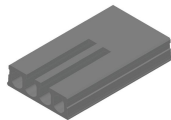
Ronde sparing + CD



Zijsparing



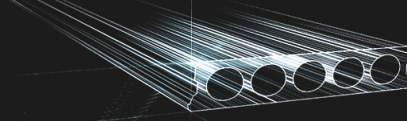
Hamerkop



Opengemaakte kanalen



Raveelijzers -
Voorgespannen



Voorraad

	Productie	Afhaalbaar	Op voorraad
Malle 1		X	X
Malle 2	X	X	
Frederickx		X	
Tessenderlo		X	

Gedownload op: 06/06/2020 00:58:46



Fingo
Malle 1 Nijverheidsstraat 21
Malle 2 Industrieweg 22
Malle B-2390
+32 (0)3 309 26 26

Fingo Tessenderlo
Truibroek 76
Ham B-3945

fingo@fingo.be

Fingo - Frederickx
Schuttersveldstraat 11
Messelbroek B-3270
+32 (0)13 78 00 78

pagina 6 / 6