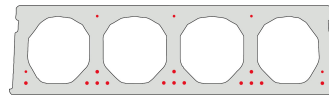


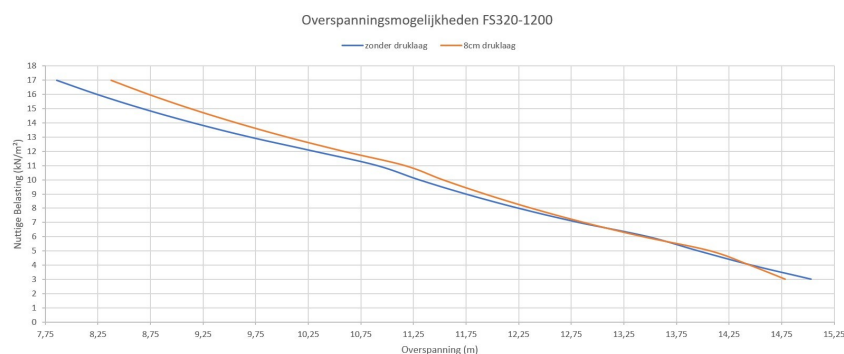
FS320-1200

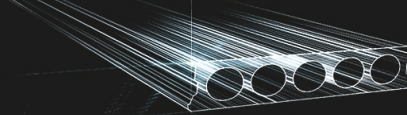


Technische info

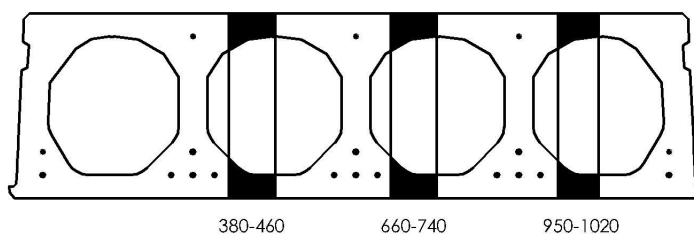
| | |
|------------------|--------------------------------------|
| Hoogte | 320mm |
| Breedte | 1200mm |
| Brandweerstand | 1 uur (2u op bestelling) |
| Milieuklasse | XC1; XC2; XC3 (andere op bestelling) |
| Transportgewicht | 3,78 kN/m ² |
| Gewicht/ m | 4,54 kN/m |
| Rekengewicht | 4,04 kN/m ² |
| Kanaalvulling | 46,66 l/m |
| Vulbeton | 10,3 l/m ² |
| Betonkwaliteit | C 50/60 |
| Staalkwaliteit | f(pk) 1860; f(p0,1k) 1580 |

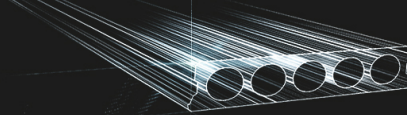
Overspanningen



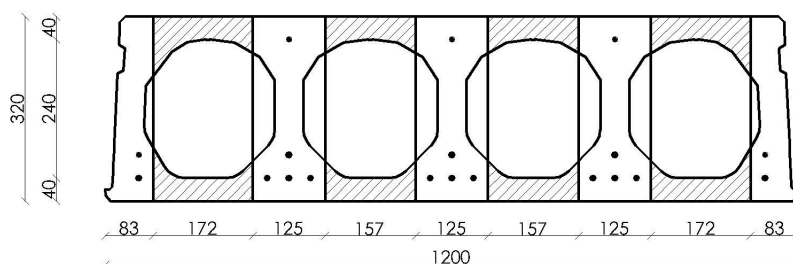


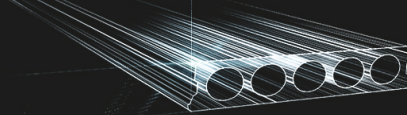
Pasplaten



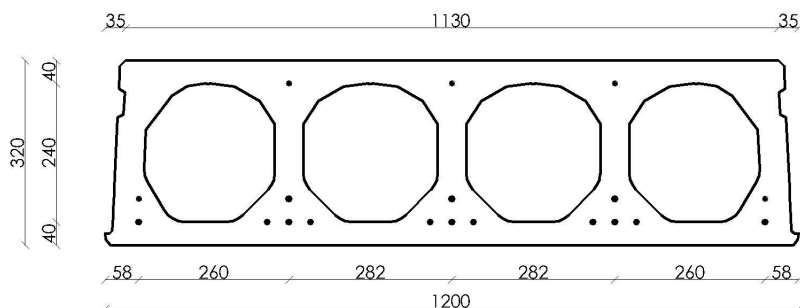


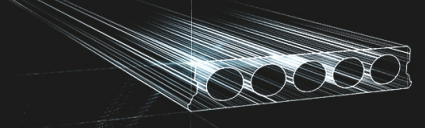
Booradvies



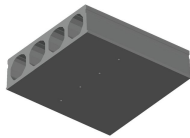


Wapeningspositie

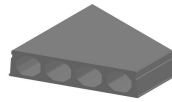




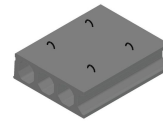
Supplementen



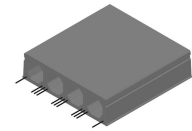
Ontwateringsgaatjes



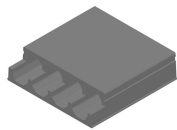
Schuinzagen/inkorten



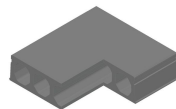
Hijsslussen



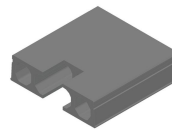
Uitstekende wapening



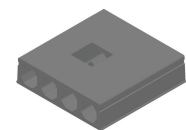
Verdunde bovenzijde



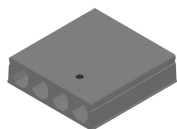
Hoeksparing



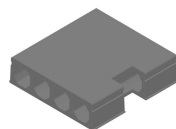
Kopsparing



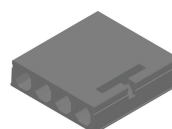
Middensparing



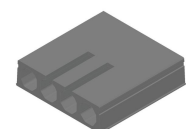
Ronde sparing + CD



Zijsparing



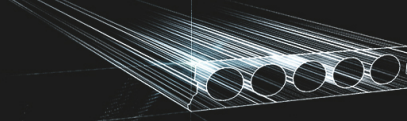
Hamerkop



Opengemaakte kanalen



Raveelijzers -
Voorgespannen



Voorraad

| | Productie | Afhaalbaar | Op voorraad |
|-------------|-----------|------------|-------------|
| Malle 1 | | | |
| Malle 2 | X | X | |
| Frederickx | | | |
| Tessenderlo | X | X | |

Gedownload op: 06/06/2020 00:32:22



Fingo
Malle 1 Nijverheidsstraat 21
Malle 2 Industrieweg 22
Malle B-2390
+32 (0)3 309 26 26

Fingo Tessenderlo
Truibroek 76
Ham B-3945

fingo@fingo.be

Fingo - Frederickx
Schuttersveldstraat 11
Messelbroek B-3270
+32 (0)13 78 00 78

pagina 6 / 6