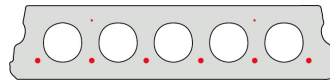
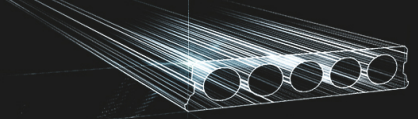


F130-600



Technische info

Hoogte	130mm
Breedte	600mm
Lengte	Wap. S350: 0,70m => 5,20m uit voorraad (per 10cm oplopend) Wap. S700: 0,70m => 5,20m uit voorraad (per 10cm oplopend)
Brandweerstand	1 uur (2u op bestelling)
Milieuklasse	XC1; XC2; XC3 (andere op bestelling)
Transportgewicht	2,12 kN/m ²
Gewicht/ m	1,27 kN/m
Rekengewicht	2,30 kN/m ²
Kanaalvulling	3,85 l/m
Vulbeton	7 l/m ²
Betonkwaliteit	C 40/50
Staalkwaliteit	f(yk) 500; f(tk) 550

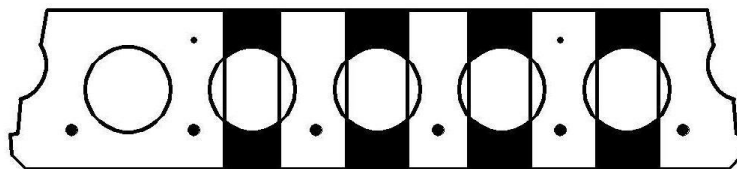


Overspanningen

Maximale Elementlengte F130-600 GLAD							
Wapeningstype	S350		S700		Max		
Druklaag	0cm	5cm	0cm	5cm	0cm	5cm	
Nuttige Belasting (kN/m ²)	3,00	4,30m	5,20m	4,50m	5,20m	4,50m	5,20m
	3,50	4,10m	5,10m	4,20m	5,20m	4,30m	5,20m
	4,00	3,90m	4,90m	4,00m	5,10m	4,10m	5,10m
	5,00	2,10m	4,60m	3,70m	4,80m	3,80m	4,80m
	6,00	1,90m	4,30m	3,40m	4,50m	3,60m	4,50m
	7,00	1,80m	2,10m	3,10m	4,20m	3,40m	4,30m
	8,00	1,70m	2,00m	2,10m	4,10m	3,20m	4,10m
	9,00	1,70m	1,90m	2,00m	3,80m	3,10m	4,00m
	10,00	1,60m	1,90m	1,90m	3,50m	3,00m	3,80m

*De waardes zijn berekend met een opleg van 7cm aan beide uiteinden

Pasplaten

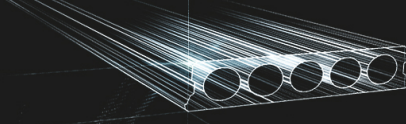


175-220

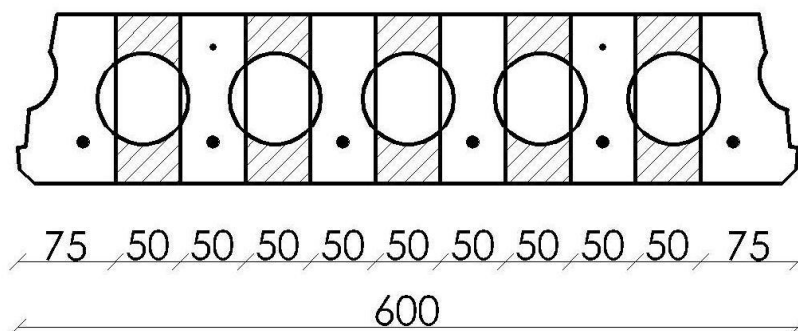
375-425

275-325

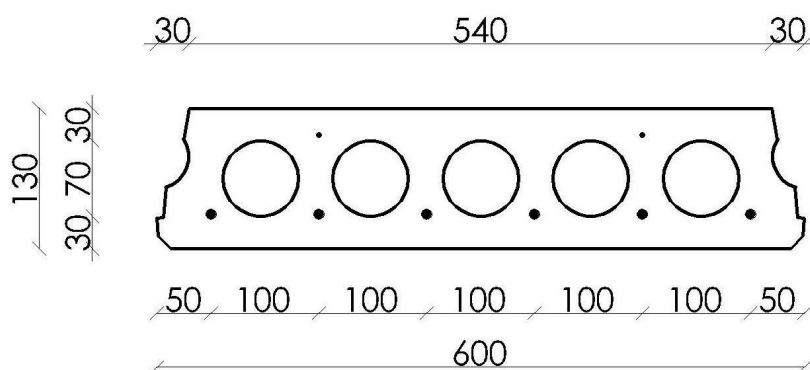
480-530

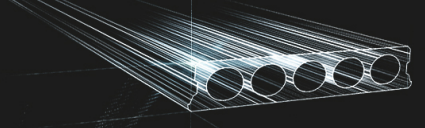


Booradvies

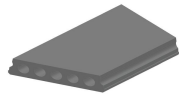


Wapeningspositie

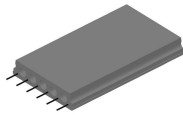




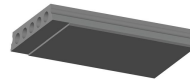
Supplementen



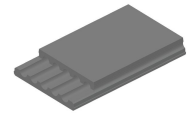
Schuinzagen/inkorten



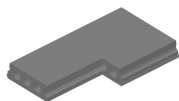
Uitstekende wapening



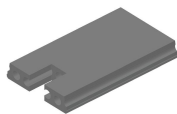
Verdunde onderzijde



Verdunde bovenzijde



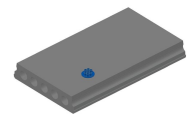
Hoeksparing



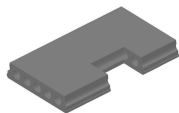
Kopsparing



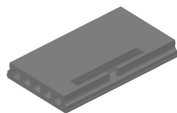
Ronde sparing



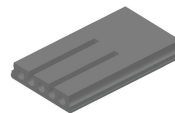
Ronde sparing + CD



Zijsparing



Hamerkop



Opengemaakte kanalen



Raveelijzers - Gewapend

Voorraad

	Productie	Afhaalbaar	Op voorraad
Malle 1	X	X	X
Malle 2			
Frederickx		X	
Tessenderlo			