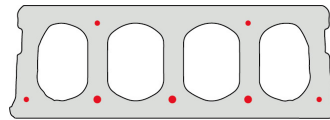
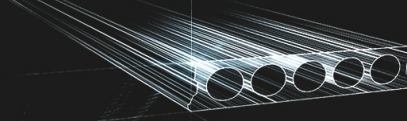


FS200-600

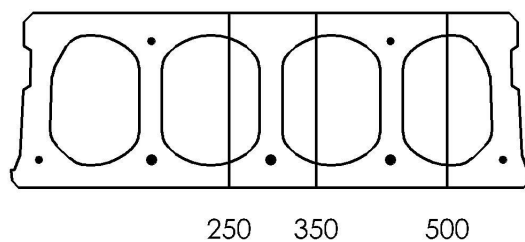


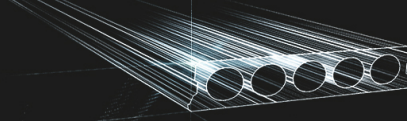
Informations techniques

Epaisseur	200mm
Largeur	596mm
Longueur	Wap. S500: 0,70m => 8,50m op bestelling (per 10cm oplpend)
Résistance au feu	1 uur (2u op bestelling)
Classes d'exposition	XC1; XC2; XC3 (andere op bestelling)
Poids au transport	2,92 kN/m ²
Poids/ m	1,75 kN/m
Poids de calcul	3,15 kN/m ²
Kanaalvulling	12,69 l/m
Béton de remplissage	9,2 l/m ²
Qualité du béton	C 50/60
Qualité d'acier	f(pk) 1860; f(p0,1k) 1580

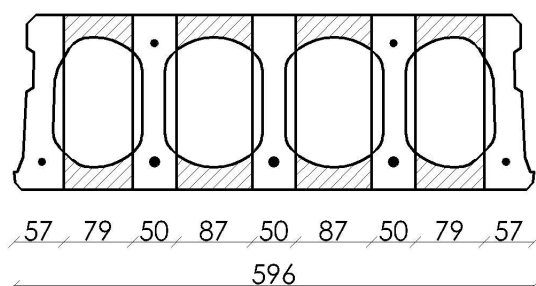


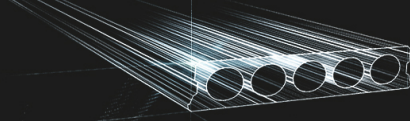
Plaques d'ajustage



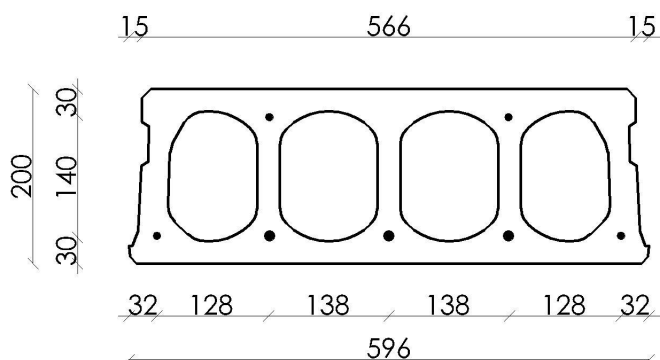


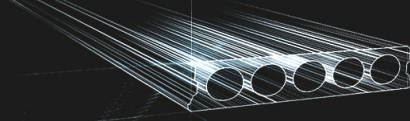
Conseil de forage



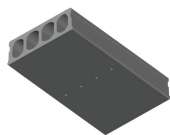


Position d'armature

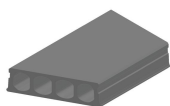




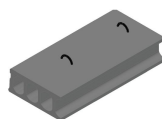
Suppléments



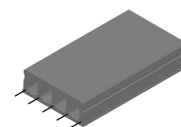
Trous de drainage d'eau



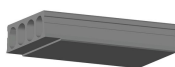
Sciage en coupe oblique



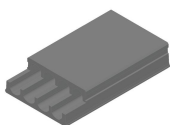
Boucles de levage



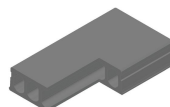
Armatures dépassantes



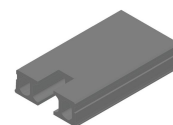
Amincissement inférieur



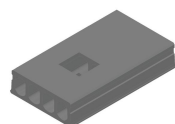
Amincissement supérieur



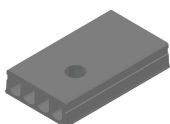
Evidement angulaire



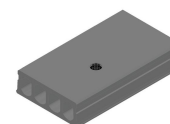
Evidement de tête



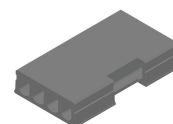
Evidement central



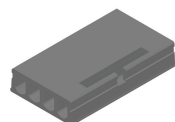
Evidement Ø90



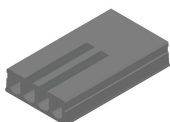
Evidement Ø90 + boîte de dérivation



Evidement latéral



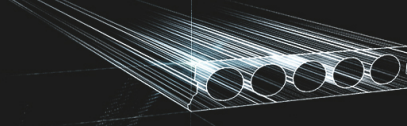
Tête de marteau



Alvéoles ouvertes



Raveelijzers



Stock

	Production	Emporter	Stock
Malle 1		X	X
Malle 2	X	X	
Frederickx			
Tessenderlo		X	

gedownload op: 08/03/2021 00:46:05



Fingo
Malle 1 Nijverheidsstraat 21
Malle 2 Industrieweg 22
Malle B-2390
+32 (0)3 309 26 26

Fingo Tessenderlo
Truibroek 76
Ham B-3945

fingo@fingo.be

Fingo - Frederickx
Schuttersveldstraat 11
Messelbroek B-3270
+32 (0)13 78 00 78

page 6 / 6