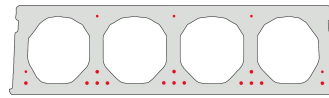


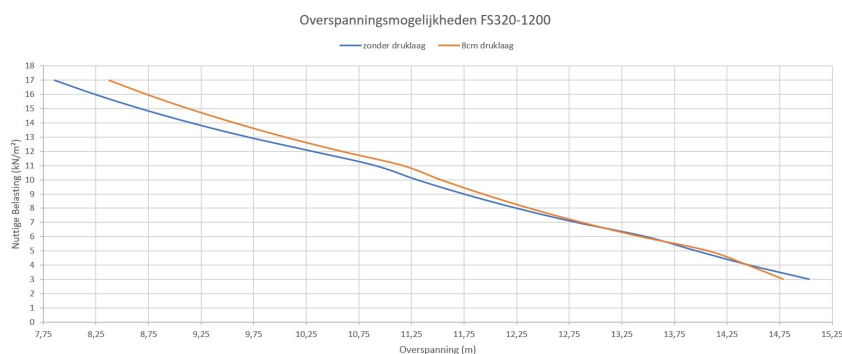
FS320-1200

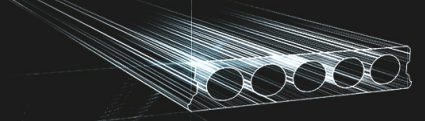


Informations techniques

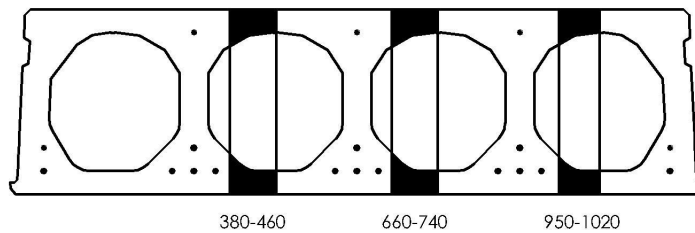
Epaisseur	320mm
Largeur	1200mm
Résistance au feu	1 uur (2u op bestelling)
Classes d'exposition	XC1; XC2; XC3 (andere op bestelling)
Poids au transport	3,78 kN/m ²
Poids/ m	4,54 kN/m
Poids de calcul	4,04 kN/m ²
Kanaalvulling	46,66 l/m
Béton de remplissage	10,3 l/m ²
Qualité du béton	C 50/60
Qualité d'acier	f(pk) 1860; f(p0,1k) 1580

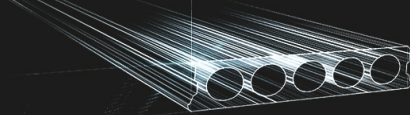
Travées



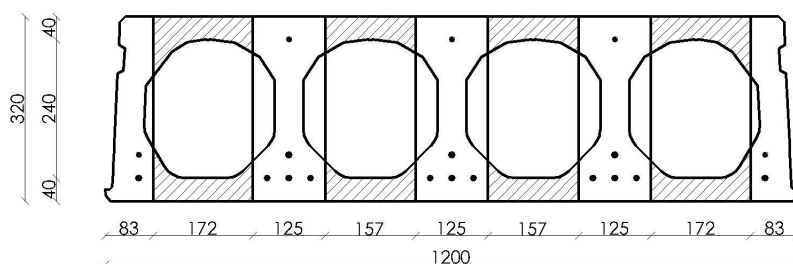


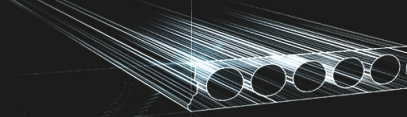
Plaques d'ajustage



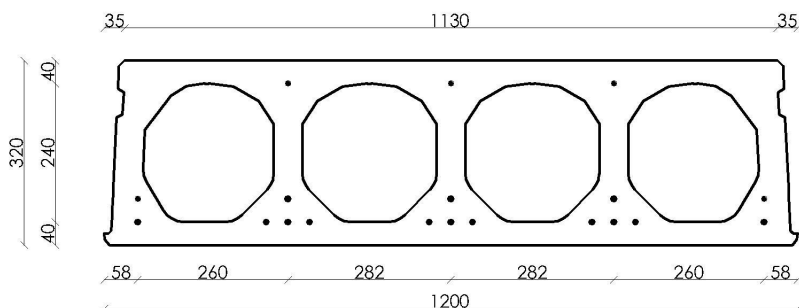


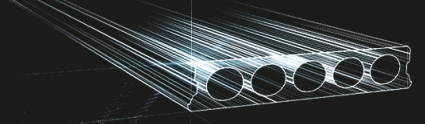
Conseil de forage



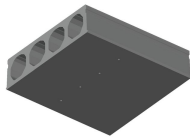


Position d'armature

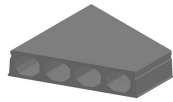




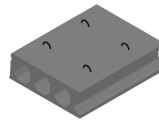
Suppléments



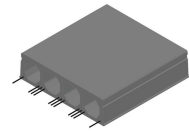
Trous de drainage d'eau



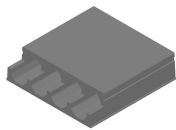
Sciage en coupe oblique



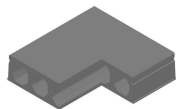
Boucles de levage



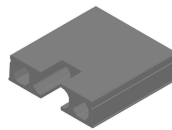
Armatures dépassantes



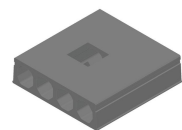
Amincissement supérieur



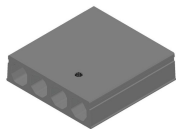
Evidement angulaire



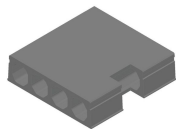
Evidement de tête



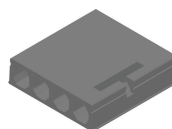
Evidement central



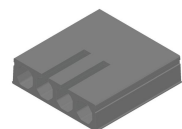
Evidement Ø90 + boîte de dérivation



Evidement latéral



Tête de marteau



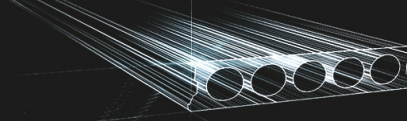
Alvéoles ouvertes



Raveelijzers



Évidement partiel



Stock

	Production	Emporter	Stock
Malle 1			
Malle 2	X	X	
Frederickx			
Tessenderlo	X	X	

gedownload op: 08/03/2021 00:21:30



Fingo
Malle 1 Nijverheidsstraat 21
Malle 2 Industrieweg 22
Malle B-2390
+32 (0)3 309 26 26

Fingo Tessenderlo
Truibroek 76
Ham B-3945

fingo@fingo.be

Fingo - Frederickx
Schuttersveldstraat 11
Messelbroek B-3270
+32 (0)13 78 00 78

page 6 / 6