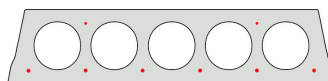
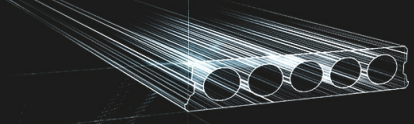


# FR13-60



## Informations techniques

Epaisseur	130mm
Largeur	600mm
Longueur	Wap. S350: 0,60m => 5,50m uit voorraad (per 10cm oplopend) Wap. S700: 0,60m => 5,50m uit voorraad (per 10cm oplopend)
Résistance au feu	1 uur
Classes d'exposition	XC1; XC2; XC3 (andere op bestelling)
Poids au transport	1,90 kN/m <sup>2</sup>
Poids/ m	1,14 kN/m
Poids de calcul	2,08 kN/m <sup>2</sup>
Kanaalvulling	5,54 l/m
Béton de remplissage	7 l/m <sup>2</sup>
Qualité du béton	C 40/50
Qualité d'acier	f(pk)500; f(p0.1k) 550

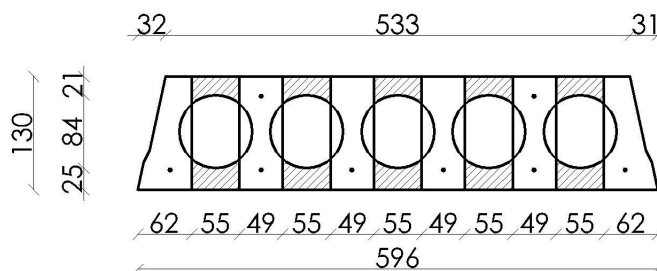


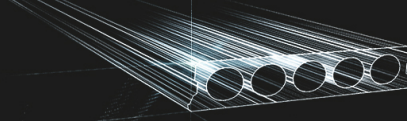
## Travées

Maximale Elementlengte F13-60 RUW							
Wapeningstype		S350		S700		Max	
Druklaag		0cm	5cm	0cm	5cm	0cm	5cm
Nuttige Belasting (kN/m <sup>2</sup> )	3,00	4,30m	5,50m	-	-	4,50m	5,50m
	3,50	4,00m	5,30m	-	-	4,30m	5,40m
	4,00	2,80m	5,00m	-	-	4,10m	5,20m
	5,00	2,60m	4,50m	-	-	3,80m	4,80m
	6,00	2,40m	2,80m	-	-	3,60m	4,60m
	7,00	2,30m	2,60m	-	-	3,40m	4,30m
	8,00	2,10m	2,50m	-	-	3,20m	4,10m
	9,00	2,00m	2,40m	-	-	3,10m	4,00m
10,00	2,00m	2,30m	-	-	3,00m	3,80m	

\*De waardes zijn berekend met een opleg van 7cm aan beide uiteinden

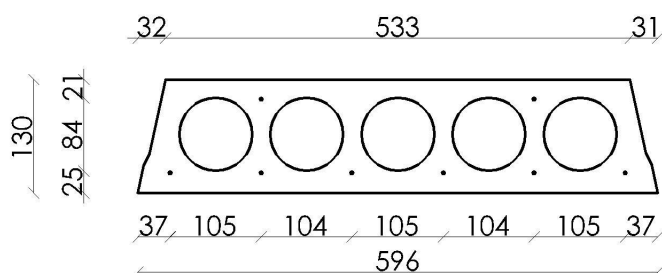
## Conseil de forage

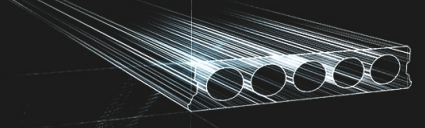




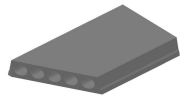
## Position d'armature

---

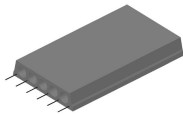




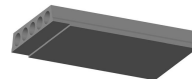
## Suppléments



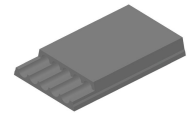
Sciage en coupe oblique



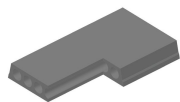
Armatures dépassantes



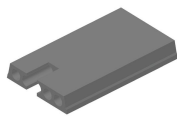
Amincissement inférieur



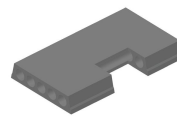
Amincissement supérieur



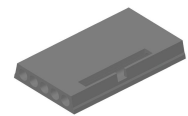
Evidement angulaire



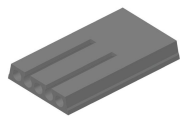
Evidement de tête



Evidement latéral



Tête de marteau



Alvéoles ouvertes



Raveelijzers - Gewapend

## Stock

	Production	Emporter	Stock
Malle 1			
Malle 2			
Frederickx	X	X	X
Tessenderlo			

gedownload op: 25/09/2020 15:02:46