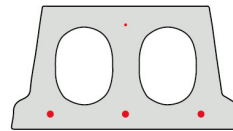
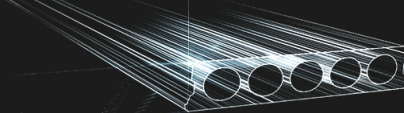


F170-330



Informations techniques

Epaisseur	173mm
Largeur	330mm
Longueur	Wap. S350: 0,70m => 2,40m op bestelling (per 10cm oplopend) Wap. S350: 2,50m => 6,50m uit voorraad (per 10cm oplopend) Wap. S350: 6,60m => 7,00m op bestelling (per 10cm oplopend) Wap. S700: 0,70m => 4,60m op bestelling (per 10cm oplopend) Wap. S700: 4,70m => 6,50m uit voorraad (per 10cm oplopend) Wap. S700: 6,60m => 7,00m op bestelling (per 10cm oplopend)
Résistance au feu	1 uur (2u op bestelling)
Classes d'exposition	XC1; XC2, XC3 (andere op bestelling)
Poids au transport	2,25 kN/m ²
Poids/ m	0,74 kN/m
Poids de calcul	3,00 kN/m ²
Kanaalvulling	7,43 l/m
Béton de remplissage	30 l/m ²
Qualité du béton	C 40/50
Qualité d'acier	f(yk) 500; f(tk) 550

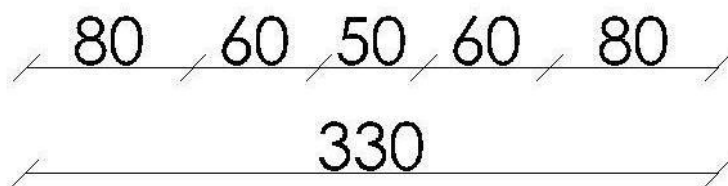
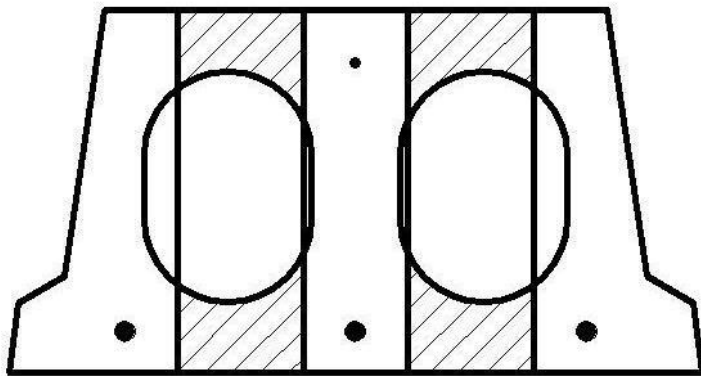
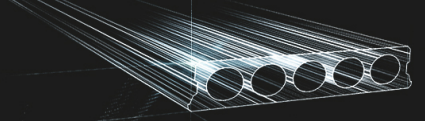


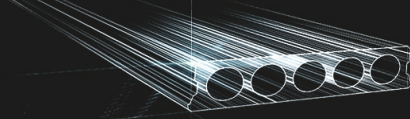
Travées

Maximale Elementlengte F170-330 RUW							
Wapeningstype		S350		S700		Max	
Druklaag		0cm	5cm	0cm	5cm	0cm	5cm
Nuttige Belasting (kN/m ²)	3,00	5,70m	6,70m	5,70m	7,00m	6,00m	7,00m
	3,50	5,50m	6,50m	5,50m	6,70m	5,80m	6,70m
	4,00	5,10m	5,90m	5,30m	6,50m	5,50m	6,50m
	5,00	4,70m	5,70m	4,90m	5,70m	5,20m	6,10m
	6,00	2,10m	5,40m	4,60m	5,40m	4,90m	5,70m
	7,00	2,00m	4,70m	4,30m	5,10m	4,60m	5,50m
	8,00	1,90m	2,10m	4,10m	4,90m	4,40m	5,20m
	9,00	1,80m	2,00m	3,90m	4,70m	4,20m	5,00m
	10,00	1,80m	2,00m	3,00m	4,50m	4,10m	4,80m

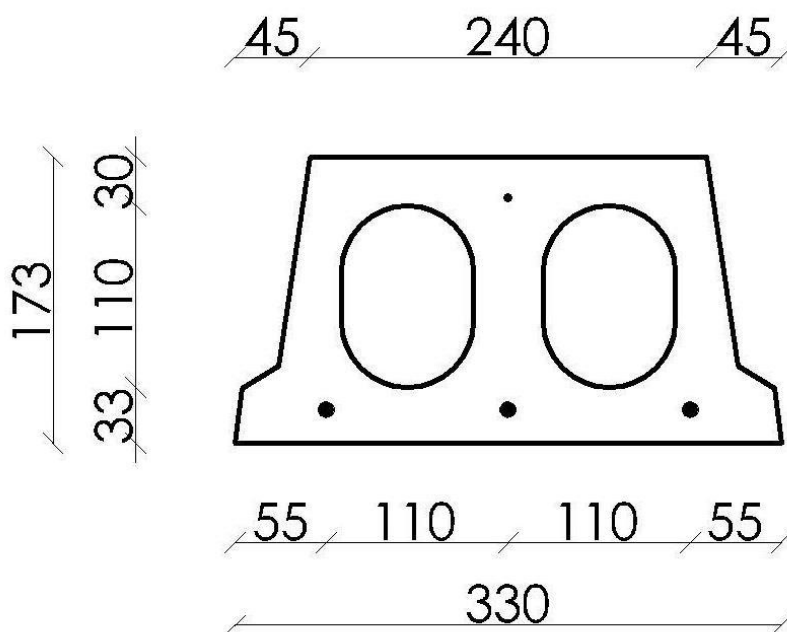
*De waardes zijn berekend met een opleg van 7cm aan beide uiteinden

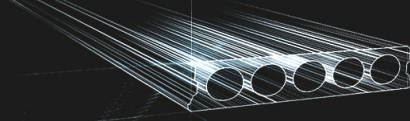
Conseil de forage



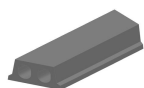


Position d'armature

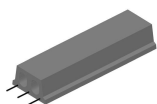




Suppléments



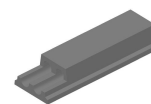
Sciage en coupe oblique



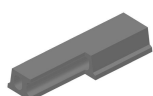
Armatures dépassantes



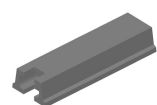
Amincissement inférieur



Amincissement supérieur



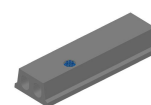
Evidement angulaire



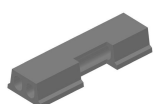
Evidement de tête



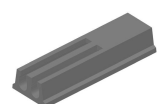
Evidement Ø90



Evidement Ø90 + boîte de dérivation



Evidement latéral



Alvéoles ouvertes



Raveelijzers - Gewapend

Stock

	Production	Emporter	Stock
Malle 1	X	X	X
Malle 2			
Frederickx		X	
Tessengerlo			

gedownload op: 25/09/2020 16:55:21