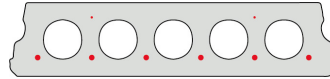
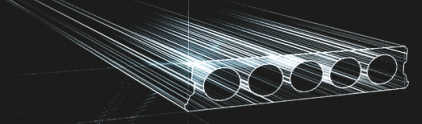


F130-600



Informations techniques

Epaisseur	130mm
Largeur	600mm
Longueur	Armature S350: 0,70m => 5,20m de stock (par 10 cm) Armature S700: 0,70m => 5,20m de stock (par 10 cm)
Résistance au feu	1 heure (2 heures sur commande)
Classes d'exposition	XC1, XC2, XC3 (d'autres sur commande)
Poids au transport	2,12 kN/m ²
Poids/ m	1,27 kN/m
Poids de calcul	2,30 kN/m ²
Remplissage d'alvéole	3,85 l/m
Béton de remplissage	7 l/m ²
Qualité du béton	C 40/50
Qualité d'acier	f(yk) 500; f(tk) 550

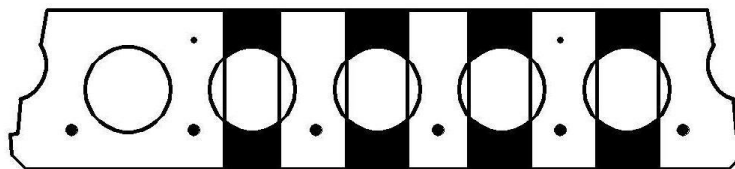


Travées

Maximale Elementlengte F130-600 GLAD							
Wapeningstype	S350		S700		Max		
Druklaag	0cm	5cm	0cm	5cm	0cm	5cm	
Nuttige Belasting (kN/m ²)	3,00	4,30m	5,20m	4,50m	5,20m	4,50m	5,20m
	3,50	4,10m	5,10m	4,20m	5,20m	4,30m	5,20m
	4,00	3,90m	4,90m	4,00m	5,10m	4,10m	5,10m
	5,00	2,10m	4,60m	3,70m	4,80m	3,80m	4,80m
	6,00	1,90m	4,30m	3,40m	4,50m	3,60m	4,50m
	7,00	1,80m	2,10m	3,10m	4,20m	3,40m	4,30m
	8,00	1,70m	2,00m	2,10m	4,10m	3,20m	4,10m
	9,00	1,70m	1,90m	2,00m	3,80m	3,10m	4,00m
	10,00	1,60m	1,90m	1,90m	3,50m	3,00m	3,80m

*De waardes zijn berekend met een opleg van 7cm aan beide uiteinden

Plaques d'ajustage



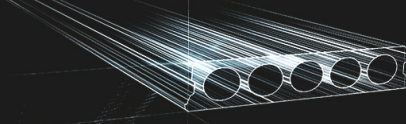
175-220

375-425

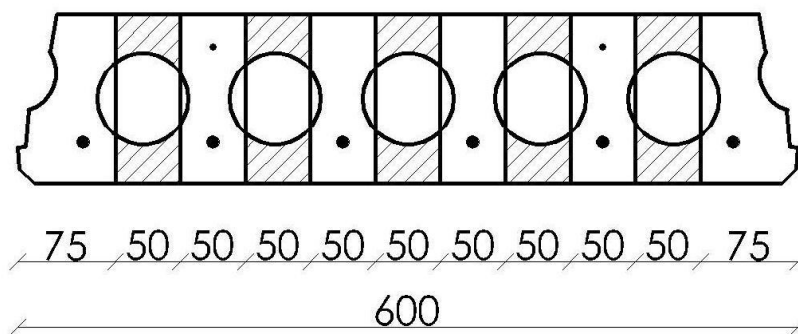
275-325

480-530

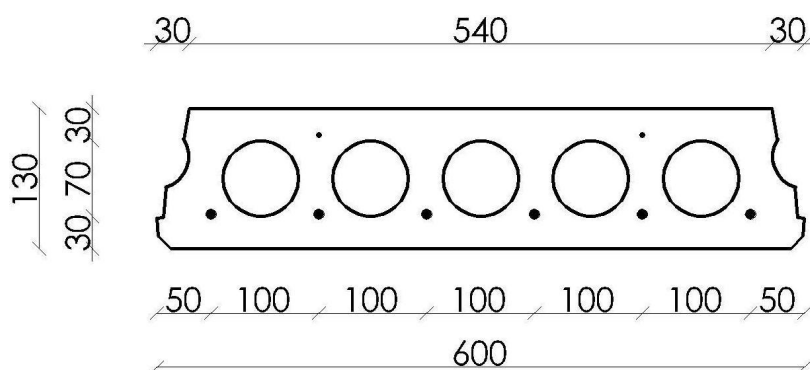
Téléchargé sur : 03/12/2021 13:54:21

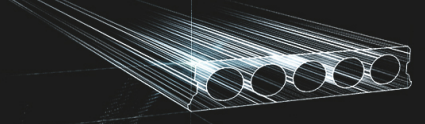


Conseil de forage

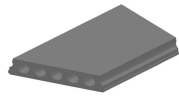


Position d'armature

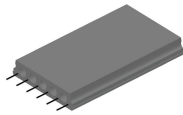




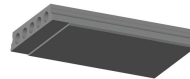
Suppléments



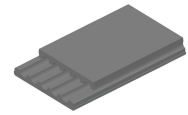
Sciage en coupe oblique



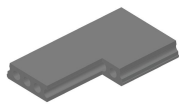
Armatures dépassantes



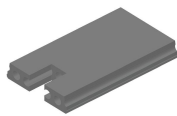
Amincissement inférieur



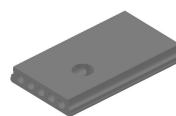
Amincissement supérieur



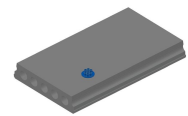
Evidement angulaire



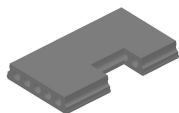
Evidement de tête



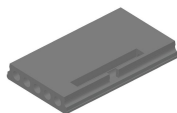
Evidement Ø90



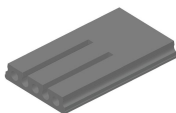
Evidement Ø90 + boîte de dérivation



Evidement latéral



Tête de marteau



Alvéoles ouvertes



Chevêtre métallique - Armé

Stock

	Production	Emporter	Stock
Malle 1	X	X	X
Malle 2			
Frederickx			
Tessengerlo			

Téléchargé sur : 03/12/2021 13:54:21